

ST5-2G

Sealed self-centering vise

Extra large clamping range

maximum flexibility
for O.D. and I.D. clamping

2 top jaw versions:

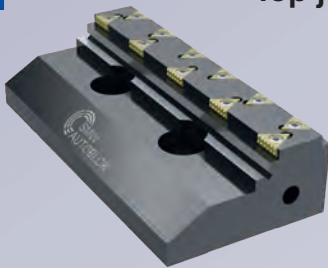
BASIC – with Gripper top jaws

PREMIUM – with SinterGrip top jaws

Reversible jaws for lowest clamping depth of workpieces and without pre-marking

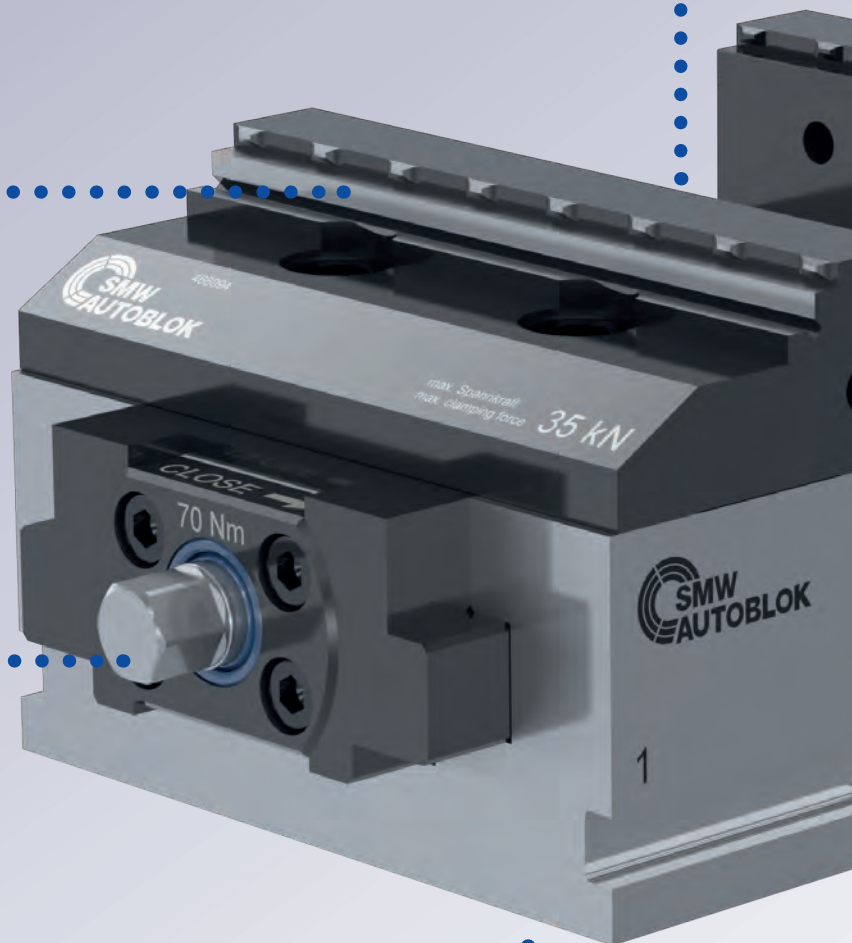
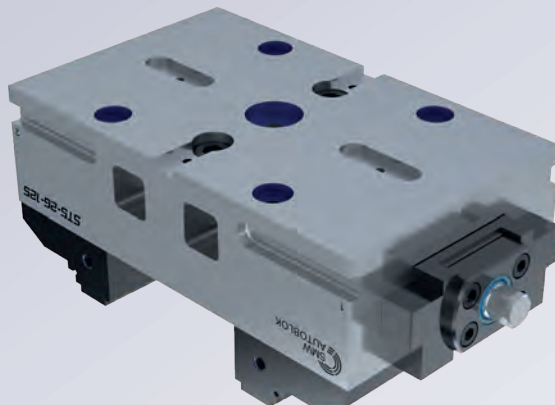


Premium SinterGrip Top jaws



Manual actuation

sealed from both sides with highest transmission offers highest clamping forces for maximum hold of the workpiece and highest process reliability



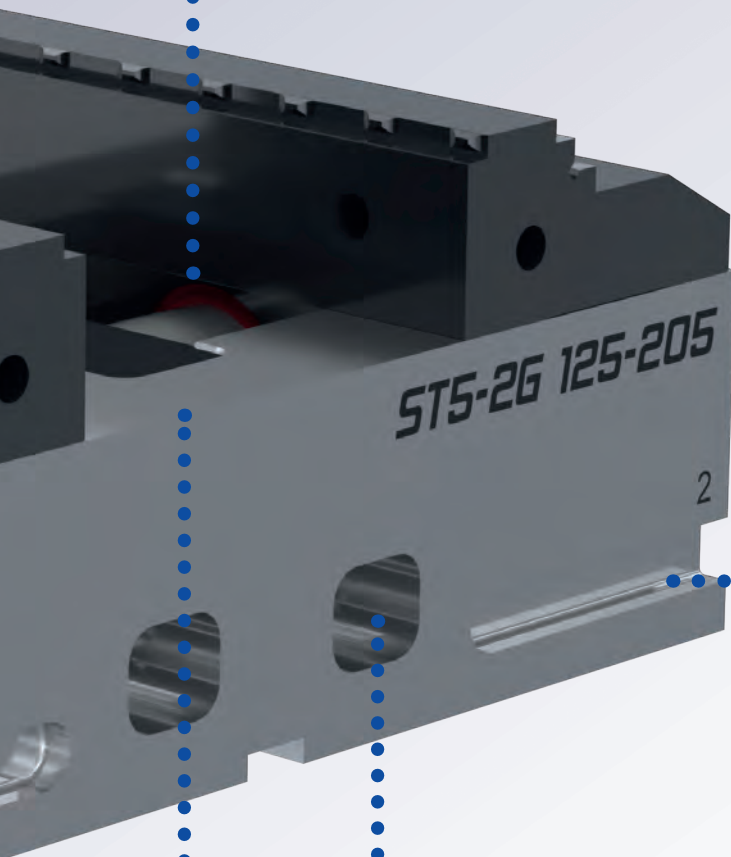
Interfaces

for zero point clamping systems and mounting holes as a standard

▶ from SMW-AUTOBLOK

- **Sealing**
- for protection against contamination

- **Ideal usable**
- for automation and pallet systems



- **Flexible mounting**
- on the machine table
- optional via clamps

- **Extra large chip evacuation windows**
- guarantees optimized chip flow

- **Guideway hardened and precision-ground**
- for highest precision and repeatability

ST5-2G 080

Self-centering vise

- Sealed – protected spindle
- Self-centering

Application/customer benefits

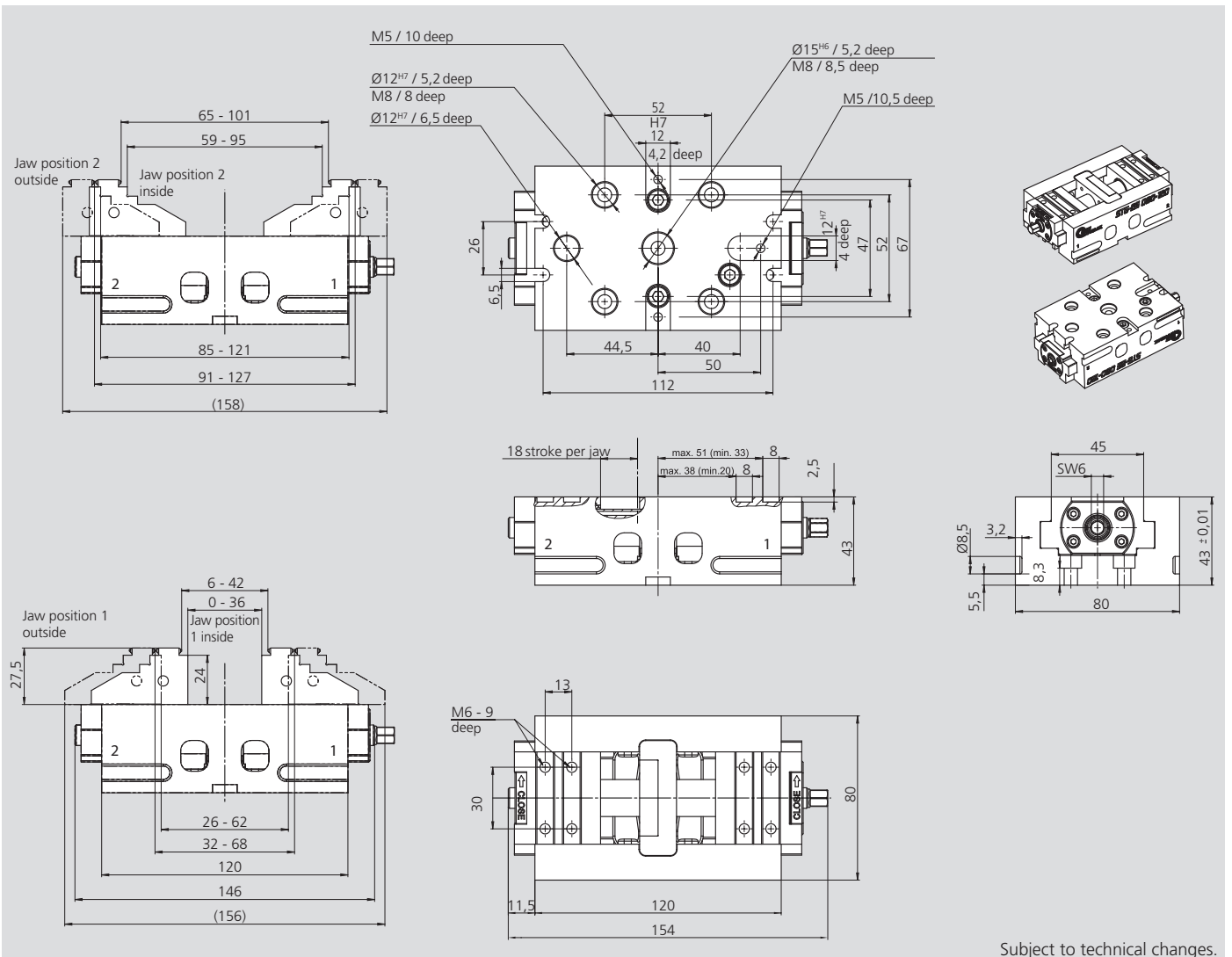
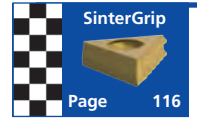
- Precision 5-axis self centering vise with highest repeatability
- Sealed spindle for protection against contamination
- Compact design for best accessibility and with large chip evacuation windows
- PREMIUM: Jaws with SinterGrip clamping inserts for lowest clamping depth of the workpiece without pre-marking
- Large clamping range
- Ideal for OP 10 and OP 20

Technical features

- Self-centering
- Manual actuation from both sides
- Clamping range 0 to 127 mm
- Arithmetic total of all moving clamping jaws up to 18 kN (at 35 Nm)
- Jaw width 80 mm
- Interface for zero point clamping systems APS / WPS / ZeroAct and Lang 52 mm as a standard

Standard equipment

5-axis vise with wrench, BASIC: 1 set top jaws Gripper
 PREMIUM: SinterGrip top jaws with 8 pieces SinterGrip clamping inserts and 8 pieces protection cover and mounting screws



Subject to technical changes.

Order review

| Type | Clamping range [mm] | Id. No. |
|---|---------------------|---------|
| ST5-2G 080 BASIC with gripper jaws | 0 - 127 | 466110 |
| ST5-2G 080 PREMIUM with SinterGrip jaws STD | 0 - 127 | 466111 |
| ST5-2G 080 PREMIUM with SinterGrip jaws ALU | 0 - 127 | 466111A |
| ST5-2G 080 PREMIUM with SinterGrip jaws HRC | 0 - 127 | 466111H |
| ST5-2G 080 without top jaws | 0 - 127 | 466065 |

- Sealed – protected spindle
- Self-centering

Application/customer benefits

- Precision 5-axis self centering vise with highest repeatability
- Sealed spindle for protection against contamination
- Compact design for best accessibility and with large chip evacuation windows
- PREMIUM: Jaws with SinterGrip clamping inserts for lowest clamping depth of the workpiece without pre-marking
- Large clamping range
- Ideal for OP 10 and OP 20

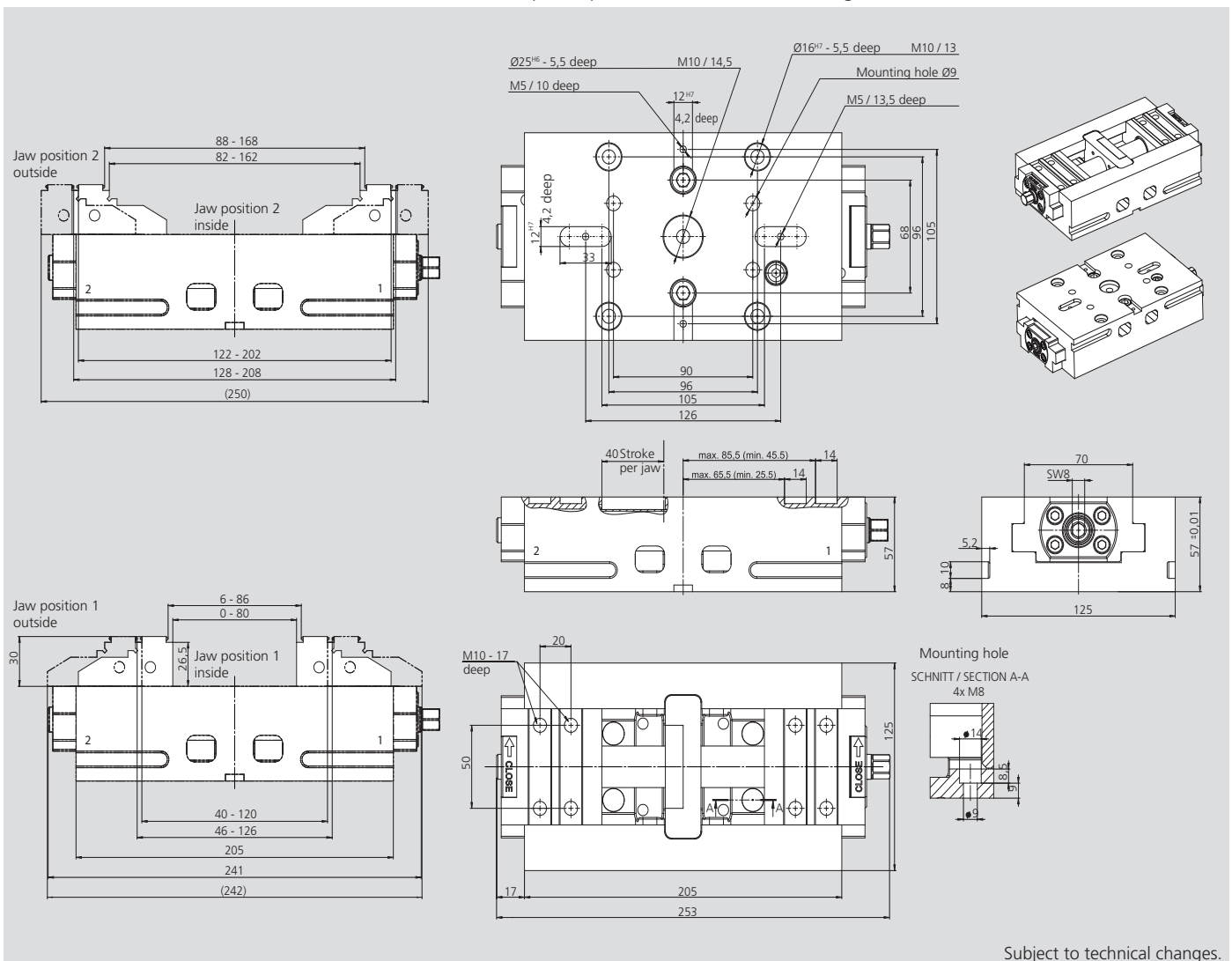
Technical features

- Self-centering
- Manual actuation from both sides
- Clamping range 0 to 208 mm
- Arithmetic total of all moving clamping jaws up to 35 kN (at 70 Nm)
- Jaw width 125 mm
- Interface for zero point clamping systems APS / WPS / ZeroAct and Lang 96 mm as a standard



Standard equipment

5-axis vise with wrench, BASIC: 1 set top jaws Gripper
 PREMIUM: SinterGrip top jaws with 12 pieces SinterGrip clamping inserts and 12 pieces protection cover and mounting bolts



Subject to technical changes.

Order review

| Type | Clamping range [mm] | Id. No. |
|---|---------------------|---------|
| ST5-2G 125 BASIC with gripper jaws | 0 - 208 | 466120 |
| ST5-2G 125 PREMIUM with SinterGrip jaws STD | 0 - 208 | 466121 |
| ST5-2G 125 PREMIUM with SinterGrip jaws ALU | 0 - 208 | 466121A |
| ST5-2G 125 PREMIUM with SinterGrip jaws HRC | 0 - 208 | 466121H |
| ST5-2G 125 without top jaws | 0 - 208 | 466056 |

- Sealed – protected spindle
- Self-centering

Application/customer benefits

- Precision 5-axis centric clamping vise with highest repeatability
- Sealed spindle for protection against contamination
- Compact design for best accessibility and with large chip evacuation windows
- PREMIUM: Jaws with SinterGrip clamping inserts for lowest clamping depth of the workpiece without pre-marking
- Shorter version
- Ideal for OP 10 and OP 20

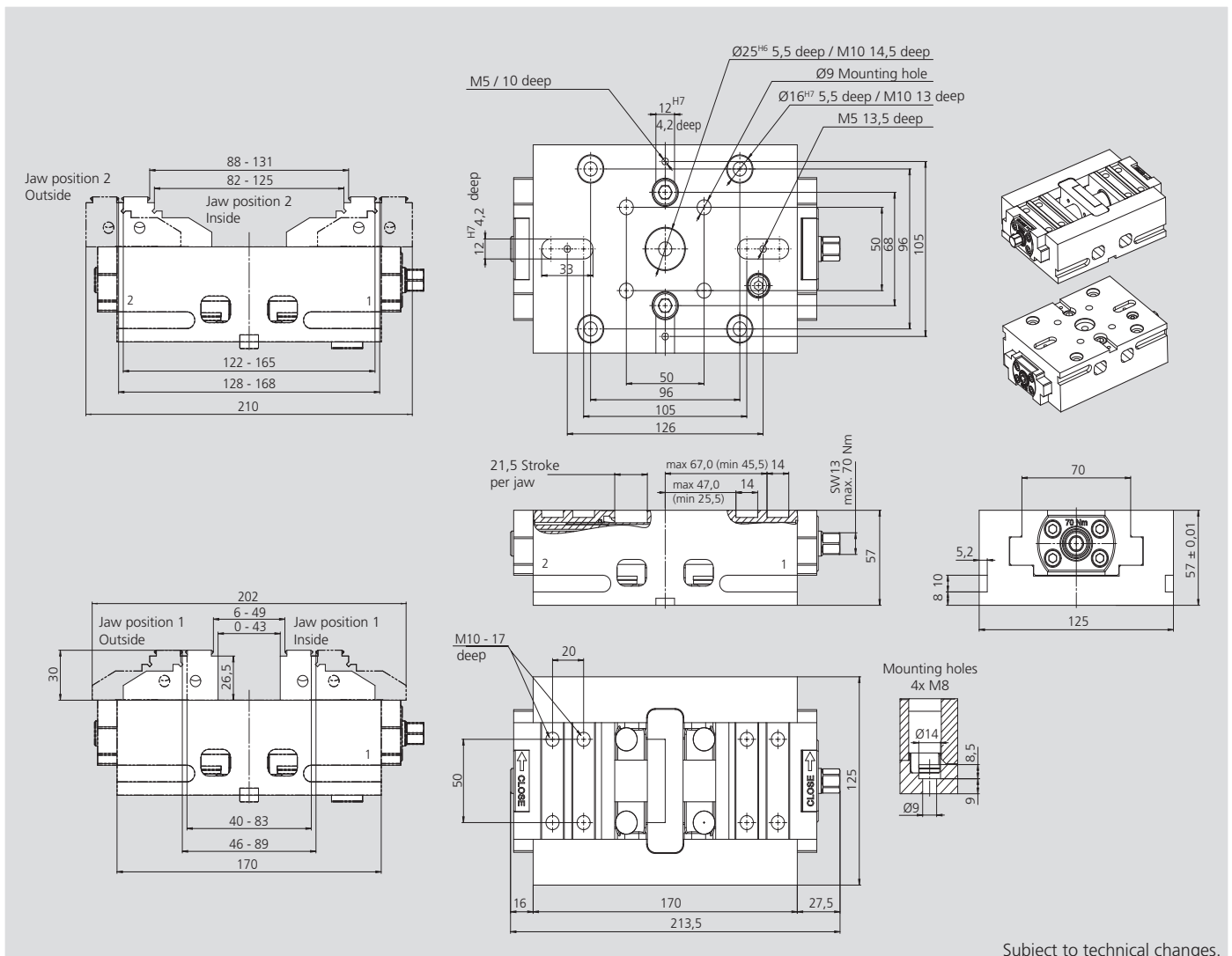
Technical features

- Self-centering
- Manual actuation from both sides (SW13/SW 8)
- Clamping range 0 to 168 mm
- Arithmetic total of all moving clamping jaws up to 35 kN (at 70 Nm)
- Jaw width 125 mm
- Interface for zero point clamping systems APS / WPS / ZeroAct and Lang 96 mm as a standard



Standard equipment

5-axis vise with wrench, BASIC: 1 set top jaws Gripper
 PREMIUM: SinterGrip top jaws with 12 pieces SinterGrip clamping inserts and 12 pieces protection cover and mounting bolts



Subject to technical changes.

Order review

| Type | Clamping range [mm] | Id. No. |
|---|---------------------|---------|
| ST5-2G S 125 BASIC with gripper jaws | 0 - 168 | 466058 |
| ST5-2G S 125 PREMIUM with SinterGrip jaws STD | 0 - 168 | 466059 |
| ST5-2G S 125 PREMIUM with SinterGrip jaws ALU | 0 - 168 | 466059A |
| ST5-2G S 125 PREMIUM with SinterGrip jaws HRC | 0 - 168 | 466059H |
| ST5-2G S 125 without top jaws | 0 - 168 | 466057 |

- Sealed – protected spindle
- Self-centering

Application/customer benefits

- Precision 5-axis centric clamping vise with highest repeatability
- Sealed spindle for protection against contamination
- Compact design for best accessibility and with large chip evacuation windows
- PREMIUM: Jaws with SinterGrip clamping inserts for lowest clamping depth of the workpiece without pre-marking
- Extra large clamping range
- Ideal for OP 10 and OP 20

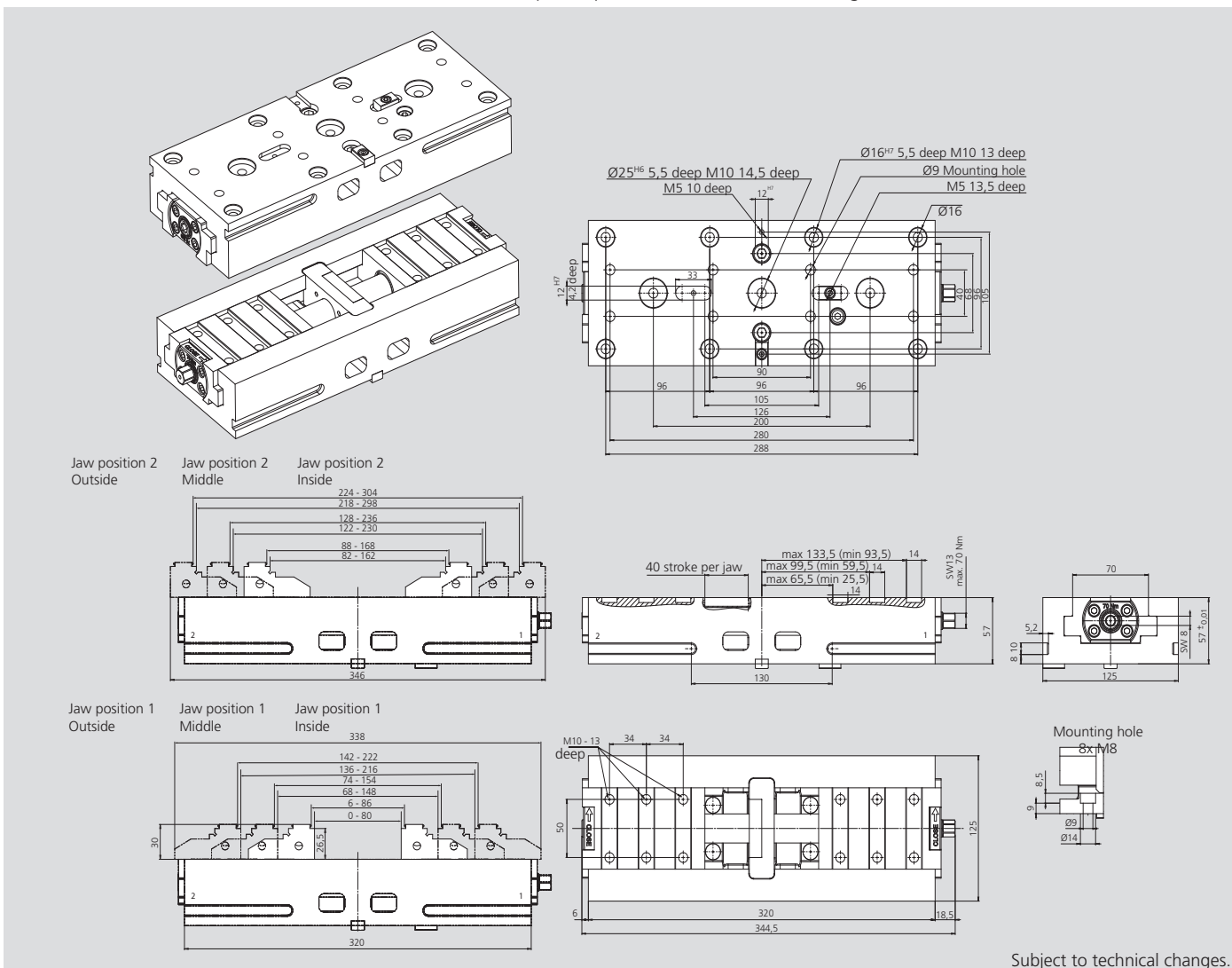
Technical features

- Self-centering
- Manual actuation from both sides (SW13/SW 8)
- Clamping range 0 to 304 mm
- Arithmetic total of all moving clamping jaws up to 35 kN (at 70 Nm)
- Jaw width 125 mm
- Interface for zero point clamping systems APS / WPS / ZeroAct and Lang 96 mm as a standard



Standard equipment

5-axis vise with wrench, BASIC: 1 set top jaws Gripper
 PREMIUM: SinterGrip top jaws with 12 pieces SinterGrip clamping inserts and 12 pieces protection cover and mounting bolts



Subject to technical changes.

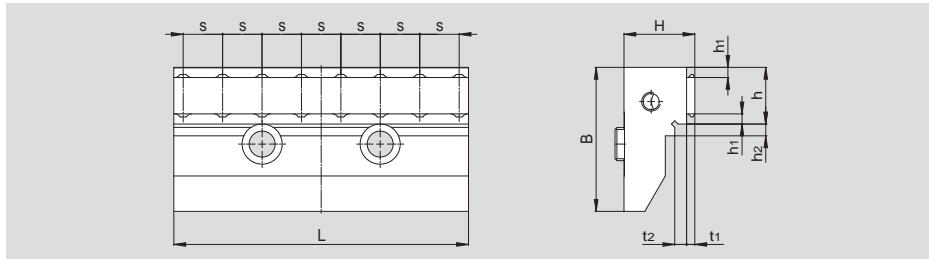
Order review

| Type | Clamping range [mm] | Id. No. |
|---|---------------------|---------|
| ST5-2G L 125 BASIC with gripper jaws | 0 - 304 | 466260 |
| ST5-2G L 125 PREMIUM with SinterGrip jaws STD | 0 - 304 | 466261 |
| ST5-2G L 125 PREMIUM with SinterGrip jaws ALU | 0 - 304 | 466261A |
| ST5-2G L 125 PREMIUM with SinterGrip jaws HRC | 0 - 304 | 466261H |
| ST5-2G L 125 without top jaws | 0 - 304 | 466224 |

ST5-2G top jaws BASIC gripper



1 set = 2 pieces; incl. 4 pcs. mounting screws

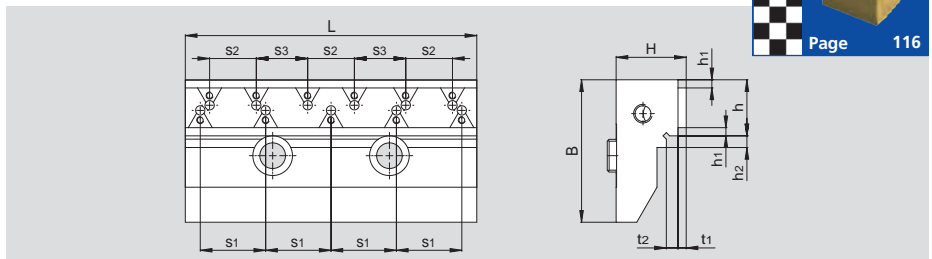


| Type | Id. No. | L | B | H | s | h | h1 | h2 | t1 | t2 |
|------------|---------|-------|----|------|-----------|------|----|----|-----|-----|
| ST5-2G 080 | 466107 | 79.8 | 47 | 27.5 | 10.5 (7x) | 18.5 | 3 | 5 | 3.5 | 4.5 |
| ST5-2G 125 | 466094 | 124.8 | 61 | 30 | 16.7 (7x) | 24 | 3 | 5 | 3.5 | 5 |

ST5-2G top jaws PREMIUM SinterGrip



1 set = 2 pieces, without SinterGrip clamping inserts
incl. 4 pcs. mounting screws

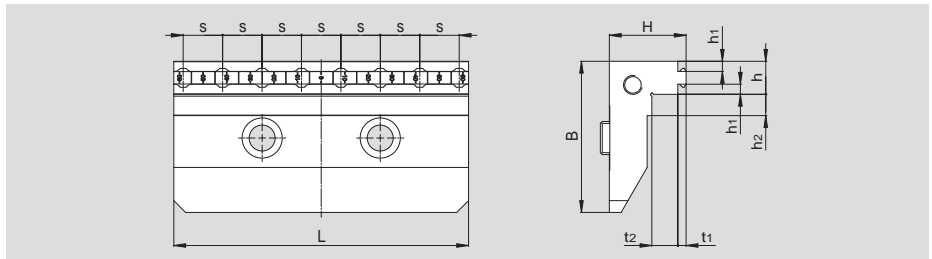


| Type | Id. No. | L | B | H | s1 | s2 | s3 | h | h1 | h2 | t1 | t2 | SinterGrip / jaw |
|------------|---------|-------|----|------|---------|---------|---------|------|-----|----|-----|-----|------------------|
| ST5-2G 080 | 466108 | 79.8 | 47 | 27.5 | 27 (2x) | 22 (3x) | - | 18.5 | 3.5 | 5 | 3.5 | 4.5 | 4+3 |
| ST5-2G 125 | 466095 | 124.8 | 61 | 30 | 28 (4x) | 20 (3x) | 22 (2x) | 24 | 3.5 | 5 | 3.5 | 5 | 6+5 |

ST5-2G top jaws BASIC gripper, extended clamping depth



1 set = 2 pieces; incl. 4 pcs. mounting screws

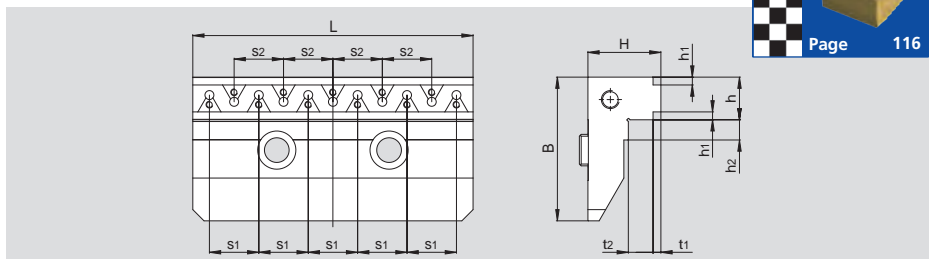


| Type | Id. No. | L | B | H | s | h | h1 | h2 | t1 | t2 |
|------------|---------|-------|------|----|-----------|----|----|----|-----|------|
| ST5-2G 080 | 466187 | 77 | 41 | 22 | 10.5 (7x) | 12 | 3 | 8 | 3.5 | 8 |
| ST5-2G 125 | 466185 | 124.8 | 59.5 | 32 | 16.7 (7x) | 14 | 3 | 9 | 3.5 | 10.5 |

ST5-2G top jaws PREMIUM SinterGrip, extended clamping depth



1 set = 2 pieces, without SinterGrip clamping inserts
incl. 4 pcs. mounting screws

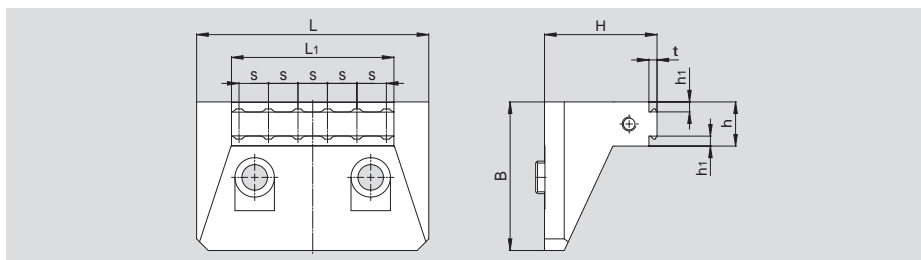


| Type | Id. No. | L | B | H | s1 | s2 | h | h1 | h2 | t1 | t2 | SinterGrip / jaw |
|------------|---------|-------|------|----|---------|---------|----|-----|----|-----|------|------------------|
| ST5-2G 080 | 466188 | 77 | 41 | 22 | 21 (3x) | 21 (2x) | 19 | 3.5 | 8 | 3.5 | 8 | 4+3 |
| ST5-2G 125 | 466186 | 124.8 | 59.5 | 32 | 22 (5x) | 22 (4x) | 19 | 3.5 | 9 | 3.5 | 10.5 | 6+5 |

ST5-2G top jaws BASIC gripper, narrow design



1 set = 2 pieces; incl. 4 pcs. mounting screws

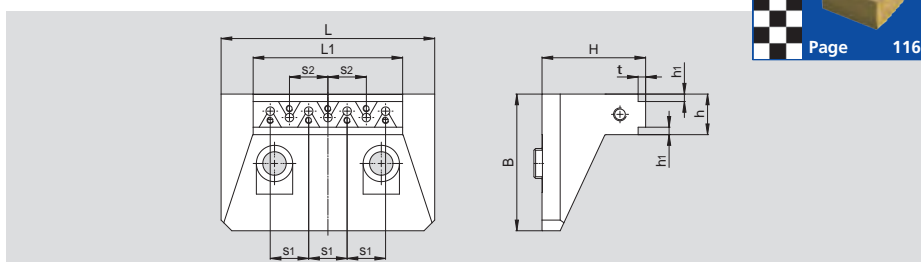


| Type | Id. No. | L | B | H | L1 | s | t | h | h1 |
|------------|---------|-----|----|------|----|------|-----|----|----|
| ST5-2G 080 | 466164 | 60 | 47 | 35.5 | 45 | 12.7 | 3.5 | 19 | 3 |
| ST5-2G 125 | 466166 | 100 | 64 | 48.5 | 70 | 12.7 | 3.5 | 19 | 3 |

ST5-2G top jaws PREMIUM SinterGrip, narrow design



1 set = 2 pieces, without SinterGrip clamping inserts
incl. 4 pcs. mounting screws

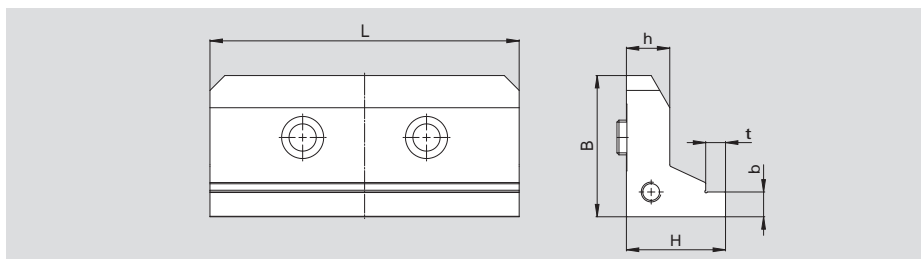


| Type | Id. No. | L | B | H | L1 | s1 | s2 | h | h1 | t | SinterGrip per jaw |
|------------|---------|-----|----|------|----|----|----|----|-----|-----|--------------------|
| ST5-2G 080 | 466165 | 60 | 47 | 35.5 | 45 | 16 | 16 | 19 | 3.5 | 3.5 | 3+2 |
| ST5-2G 125 | 466167 | 100 | 64 | 48.5 | 70 | 18 | 18 | 19 | 3.5 | 3.5 | 4+3 |

ST5-2G top jaws, 5-axis smooth

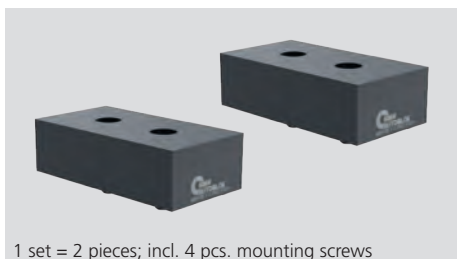


1 set = 2 pieces; incl. 4 pcs. mounting screws

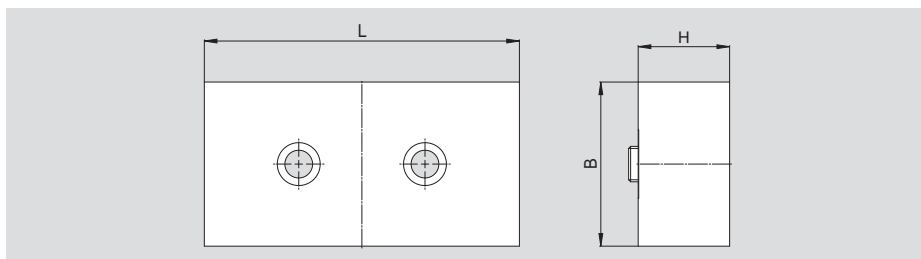


| Type | Id. No. | L | B | H | h | b | t |
|------------|---------|-------|------|----|------|----|---|
| ST5-2G 080 | 466200 | 79.8 | 38.5 | 30 | 15.5 | 8 | 6 |
| ST5-2G 125 | 466199 | 124.8 | 57 | 40 | 17.5 | 10 | 8 |

ST5-2G soft top jaws, low design, material: 1.0503



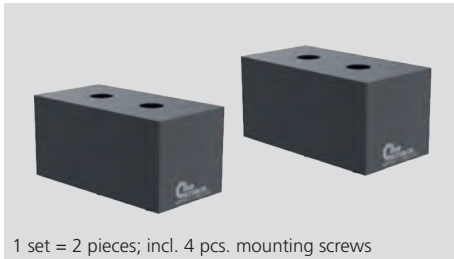
1 set = 2 pieces; incl. 4 pcs. mounting screws



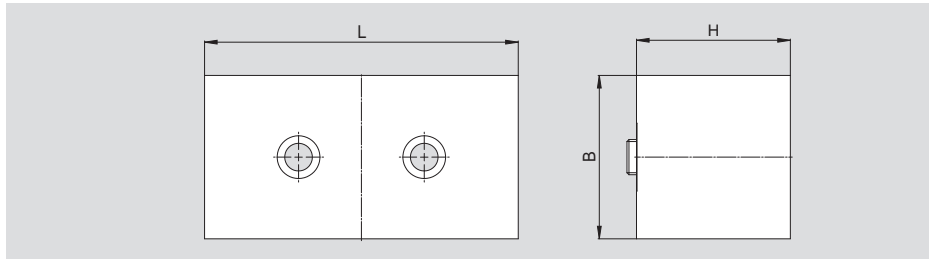
| Type | Id. No. | L | B | H |
|-------------|----------|-------|----|------|
| ST5-2G 080 | 466157-1 | 79.8 | 50 | 29.7 |
| ST5-2G 080* | 466333-1 | 79.8 | 50 | 29.7 |
| ST5-2G 125 | 466158-1 | 124.8 | 65 | 36.2 |
| ST5-2G 125* | 466334-1 | 124.8 | 65 | 36.2 |

* Aluminium version

ST5-2G soft top jaws, high design, material 1.0503



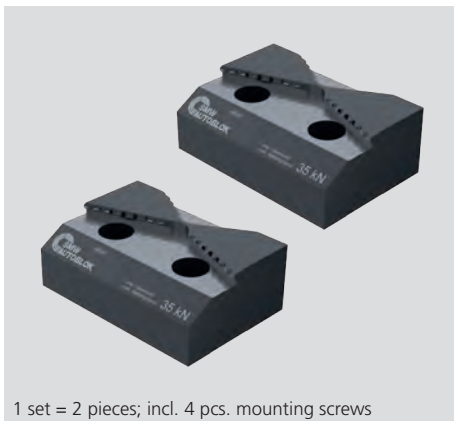
1 set = 2 pieces; incl. 4 pcs. mounting screws



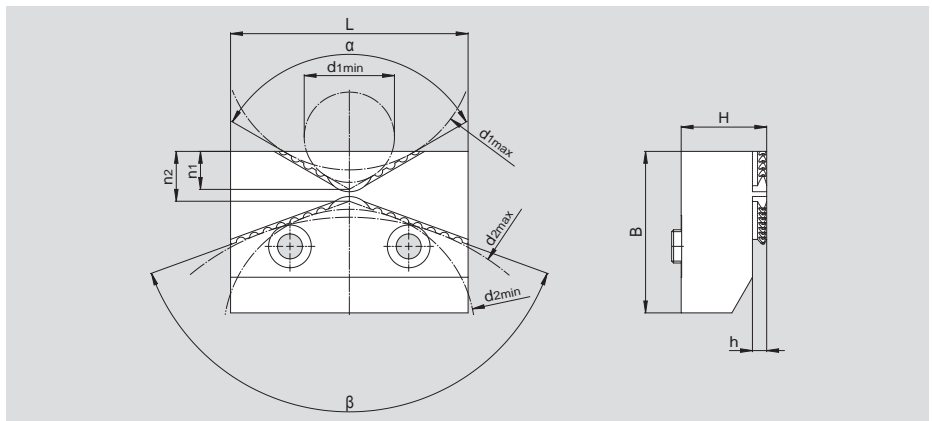
| Type | Id. No. | L | B | H |
|-------------|----------|-------|----|------|
| ST5-2G 080 | 466157-2 | 79.8 | 55 | 52.7 |
| ST5-2G 080* | 466333-2 | 79.8 | 55 | 52.7 |
| ST5-2G 125 | 466158-2 | 124.8 | 65 | 61.2 |
| ST5-2G 125* | 466334-2 | 124.8 | 65 | 61.2 |

* Aluminium version

ST5-2G top jaws BASIC gripper



1 set = 2 pieces; incl. 4 pcs. mounting screws

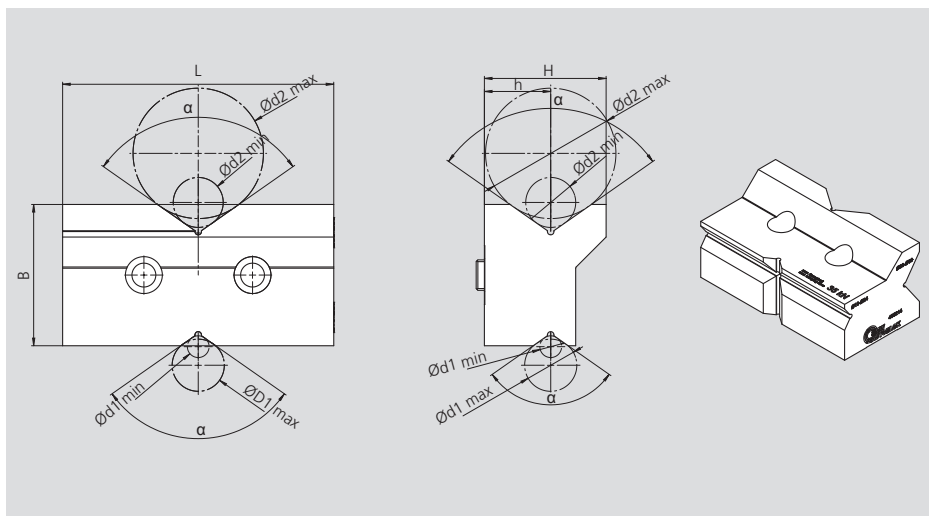


| Type | Id. No. | L | B | H | h | d1min | d1max | d2min | d2max | n1 | n2 | α | β | Clamping range |
|------------|---------|-----|----|----|---|-------|-------|-------|-------|----|----|----------|---------|----------------|
| ST5-2G 080 | 466282 | 65 | 45 | 20 | 4 | 18.2 | 67.5 | 65.8 | 124 | 10 | 15 | 120° | 140° | Ø020-120 |
| ST5-2G 125 | 466201 | 100 | 68 | 36 | 6 | 38 | 106 | 106 | 210 | 16 | 21 | 120° | 140° | Ø038-210 |

ST5-2G top jaws, smooth, prism jaws



1 set = 2 pieces; incl. 4 pcs. mounting screws

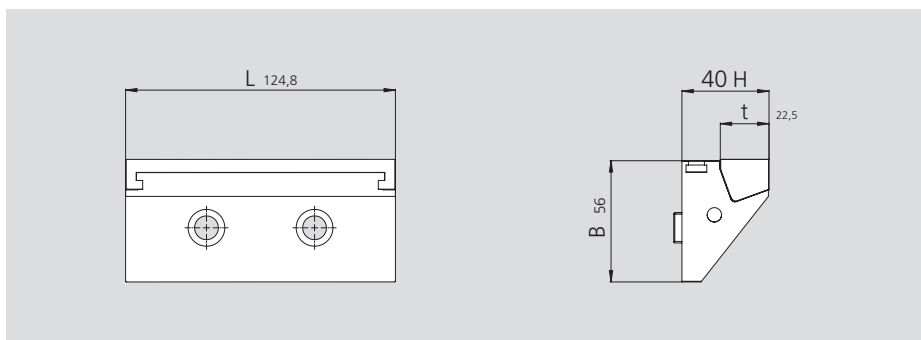


| Type | Id. No. | L | B | H | h | d1min | d1max | d2min | d2max | α | Clamping range |
|------------|---------|-------|----|----|------|-------|-------|-------|-------|----------|----------------|
| ST5-2G 080 | 466215 | 79.8 | 48 | 38 | 22 | 5 | 13 | 13 | 36 | 110° | Ø5-36 |
| ST5-2G 125 | 466214 | 124.8 | 65 | 56 | 30.5 | 10 | 24 | 23 | 60 | 110° | Ø10-60 |

ST5-2G pull-down jaws



1 set = 2 pull-down jaws, incl. 4 pcs. mounting screws

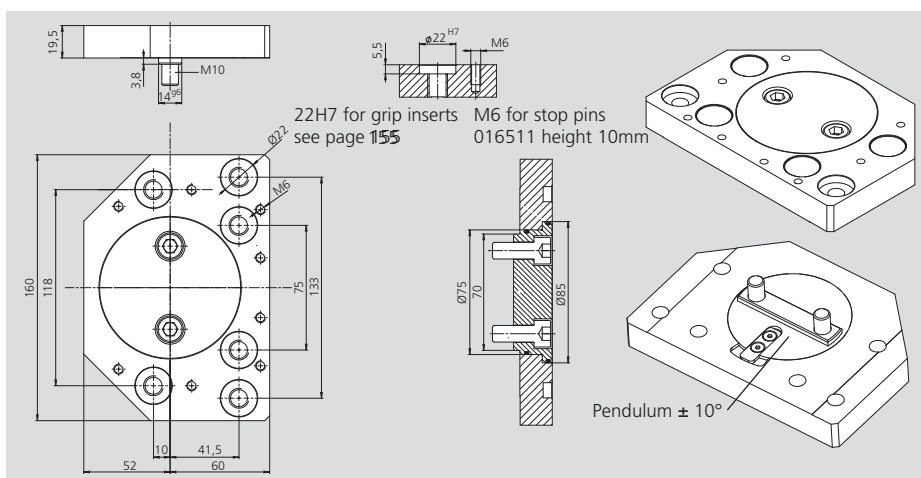


| Type | Id. No. |
|---------------------------|---------|
| ST5-2G 125 pull-down jaws | 466401 |

ST5-2G pendulum jaws, sealed



1 pendulum jaw, incl. 2 pcs. mounting screws without grip inserts and stop pins

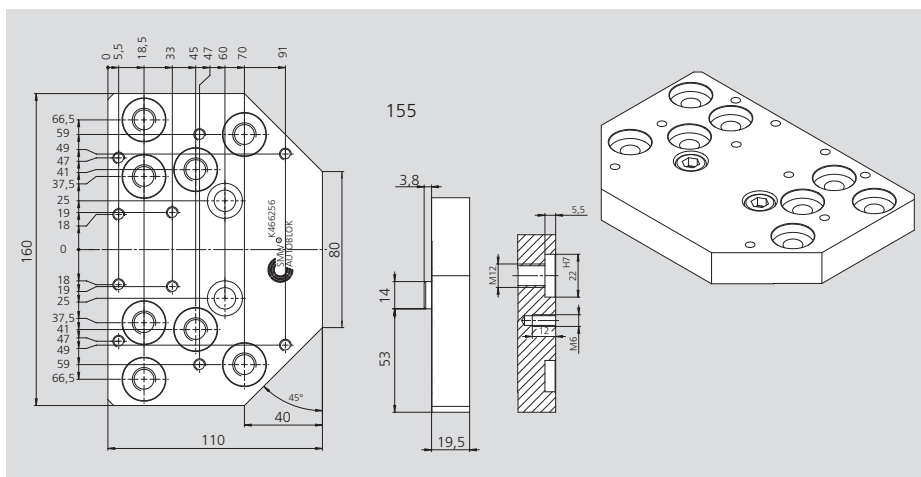


| Type | Id. No. |
|--------------------------|---------|
| ST5-2G 125 pendulum jaws | 466255 |

ST5-2G pendulum fix jaws, sealed

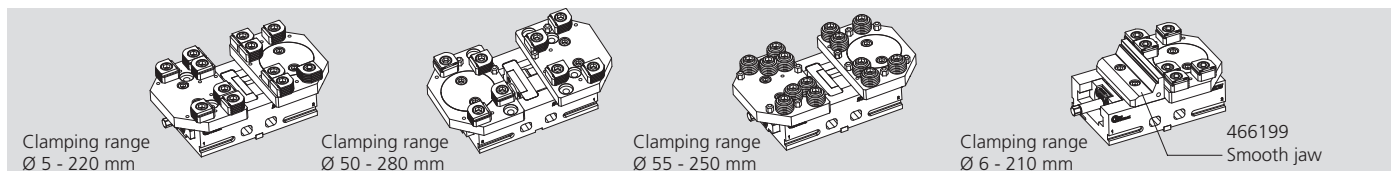


1 pendulum fix jaw, incl. 2 pcs. mounting screws without grip inserts and stop pins

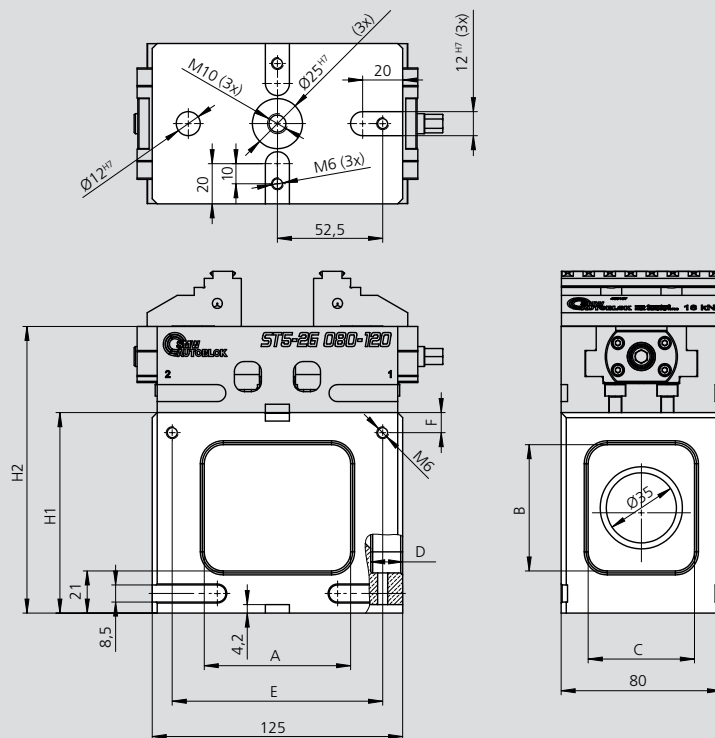


| Type | Id. No. |
|------------------------------|---------|
| ST5-2G 125 pendulum fix jaws | 466256 |

Application examples



Mounting devices for ST5-2G 080

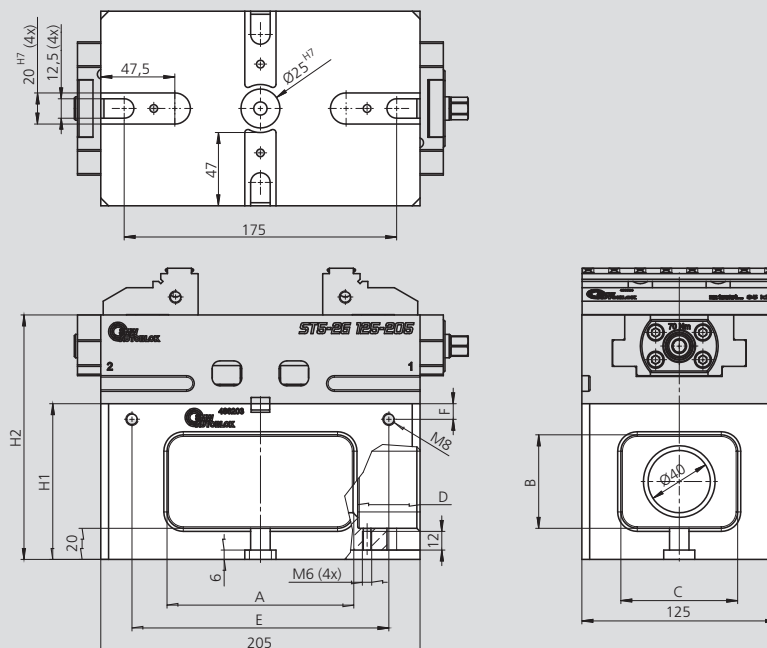


Subject to technical changes.

ST5-2G not included in scope of delivery.

| Type | Id. No. | H1 | H2 | A | B | C | D | E | F |
|------------|---------|-----|-----|----|----|----|----|-----|----|
| ST5-2G 080 | 466327 | 60 | 103 | 75 | 25 | 55 | 16 | 105 | 10 |
| ST5-2G 080 | 466328 | 100 | 143 | 75 | 65 | 55 | 16 | 105 | 10 |

Mounting devices for ST5-2G 125-205

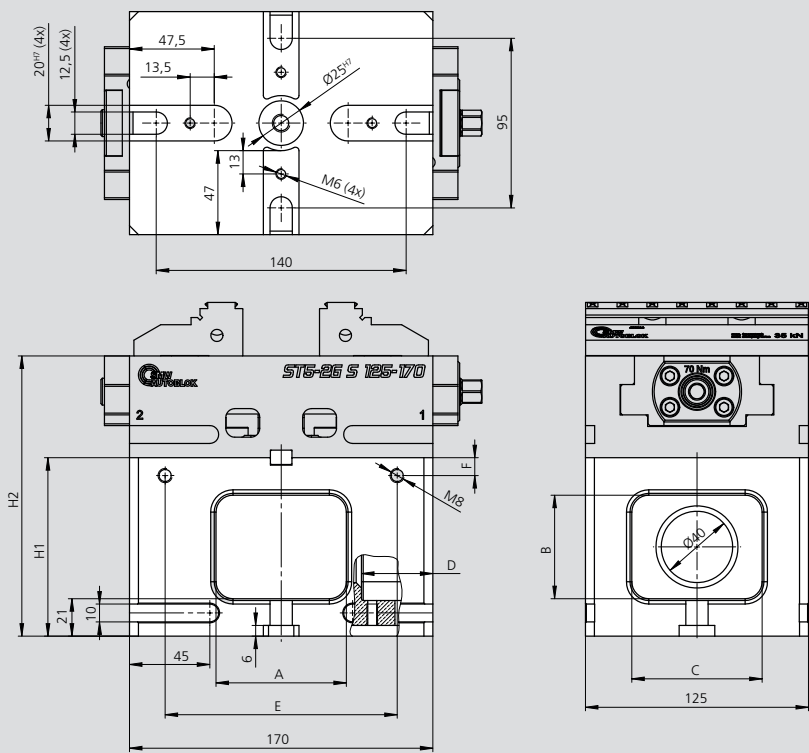


Subject to technical changes.

ST5-2G not included in scope of delivery.

| Type | Id. No. | H1 | H2 | A | B | C | D | E | F |
|-------------|---------|-----|-----|-----|----|----|-------|-----|----|
| ST5-2G H60 | 466202 | 60 | 117 | 120 | 40 | 70 | 29/16 | 145 | 20 |
| ST5-2G H100 | 466203 | 100 | 157 | 120 | 60 | 75 | 40 | 165 | 10 |
| ST5-2G H120 | 466204 | 120 | 177 | 120 | 75 | 75 | 40 | 165 | 20 |

Mounting devices for ST5-2G S 125-170

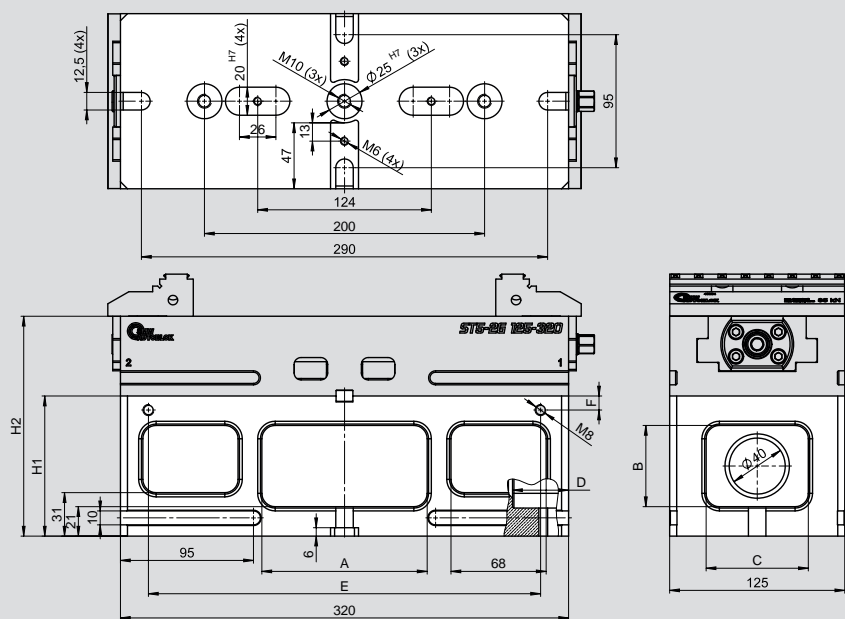


Subject to technical changes.

ST5-2G not included in scope of delivery.

| Type | Id. No. | H1 | H2 | A | B | C | D | E | F |
|------------------|---------|-----|-----|----|----|----|----|-----|----|
| ST5-2G S 125-170 | 466321 | 60 | 117 | 75 | 25 | 75 | 29 | 130 | 10 |
| ST5-2G S 125-170 | 466322 | 100 | 157 | 75 | 60 | 75 | 40 | 130 | 10 |
| ST5-2G S 125-170 | 466323 | 120 | 177 | 75 | 80 | 75 | 40 | 130 | 10 |

Mounting devices for ST5-2G L 125-320



Subject to technical changes.

ST5-2G not included in scope of delivery.

| Type | Id. No. | H1 | H2 | A | B | C | D | E | F |
|------------------|---------|-----|-----|-----|----|----|----|-----|----|
| ST5-2G L 125-320 | 466324 | 60 | 117 | 120 | 25 | 75 | 40 | 280 | 10 |
| ST5-2G L 125-320 | 466325 | 100 | 157 | 120 | 60 | 75 | 40 | 280 | 10 |
| ST5-2G L 125-320 | 466326 | 120 | 177 | 120 | 80 | 75 | 40 | 280 | 10 |



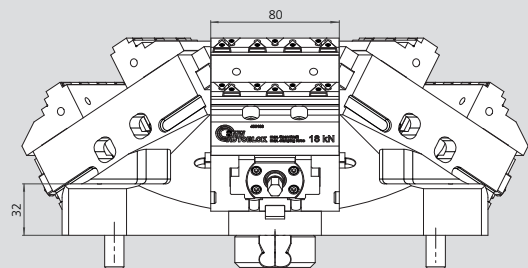
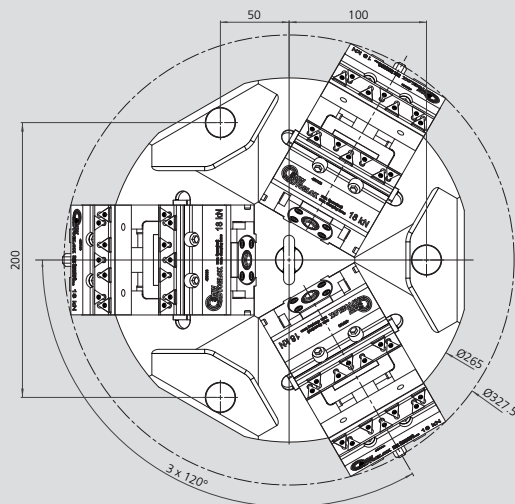
Applications / Customer Benefits

- Ideal for 5 axis machines
- Compact design
- Possibility to be mounted directly on machine tools with radial slots at 45 / 60 degrees
- Possibility to be mounted directly on single plate or DUO APS (pitch 200)

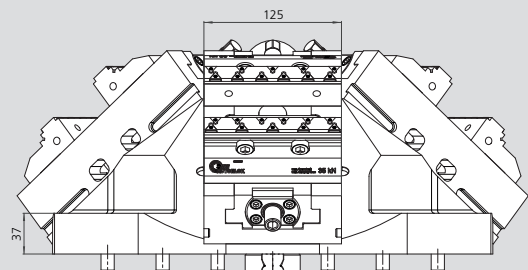
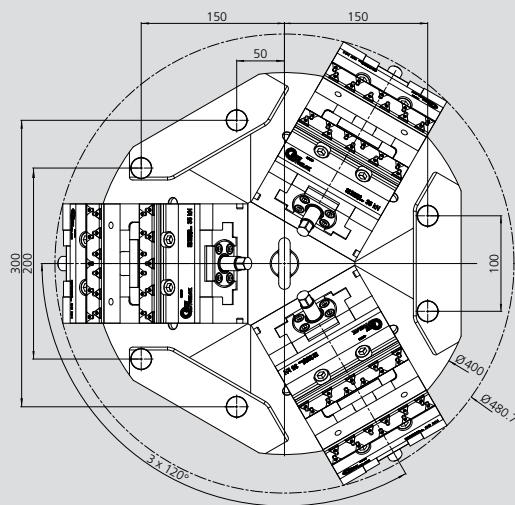
Technical features

- Material: ALU

467187



467188



| Type | Id. No. | Weight [kg] |
|-------------------------|---------|-------------|
| IMG 080-220 ALU pyramid | 467187 | 17.9 |
| IMG 125-220 ALU pyramid | 467188 | 58.3 |

ST5-2G 080 overview configurations

Clamping pin kit APS 140 ●●●●●●●●●●
incl. mounting
Id. No. 460213

not illustrated:
Clamping pin kit APS 100
incl. mounting
Id. No. 460214

not illustrated:
Adaption washer 25g6
Id. No. 460139

Anti-rotation kit APS 100
● Diameter 12h6
● incl. mounting
● Id. No. 46162133

Set of clamps
● Id. No. see table below

Anti-rotation kit APS 140
● Positioning key 12h6
● incl. mounting screw M5
● Id. No. 466135

Mounting screw set
● consisting of 4 pieces mounting screws
● Id. No. 466168

ST5-2G 125 overview configurations

Clamping pin kit APS 140 ●●●●●●●●●●
incl. mounting
Id. No. 460215

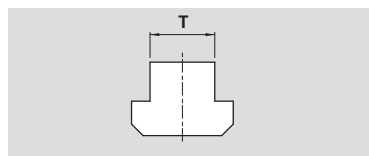
not illustrated:
Adaption washer 25g6
Id. No. 460139

Set of clamps
● Id. No. see table below

Anti-rotation kit APS 140
● Positioning key 12h6
● incl. mounting screw M5
● Id. No. 466135

Mounting screw set
● consisting of 4 pieces mounting screws
● Id. No. 466169

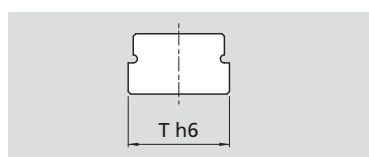
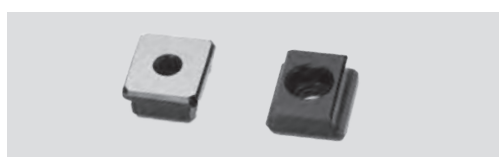
Set of clamps



Consisting of:
1 clamp
with adjustable mounting
incl. T-nut and screw

| Type | T | 10 mm | 12 mm | 14 mm | 16 mm | 18 mm | 20 mm | 22 mm |
|------------|---|--------|--------|--------|--------|--------|--------|--------|
| ST5-2G 080 | | 466150 | 466151 | 466152 | 466153 | 466154 | 466155 | - |
| ST5-2G 125 | | - | 466142 | 466143 | 466144 | 466145 | 466146 | 466147 |

Pair of positioning keys (special dimensions)



| Type | Th6 | 12 mm - h6 | 14 mm - h6 | 16 mm - h6 | 18 mm - h6 | 20 mm - h6 | 22 mm - h6 |
|--------|-----|------------|------------|------------|------------|------------|------------|
| ST5-2G | | 466135 | 462058 | 462059 | 462060 | 462061 | 462062 |

ST5-HDS 125-320

5-axis vise – heavy duty version

- Extra rigid design with very high clamping forces
- Sealed – protected spindle
- Central clamping



Application/customer benefits

- Heavy duty high precise 5-axis centric clamping vise with highest repeatability
- Sealing for protection against contamination
- Compact design for best accessibility and with large chip ejection windows
- PREMIUM: Jaws with SinterGrip clamping inserts for lowest clamping depth of the workpiece without pre-marking
- Extra large clamping range
- Ideal for OP 10 and OP 20

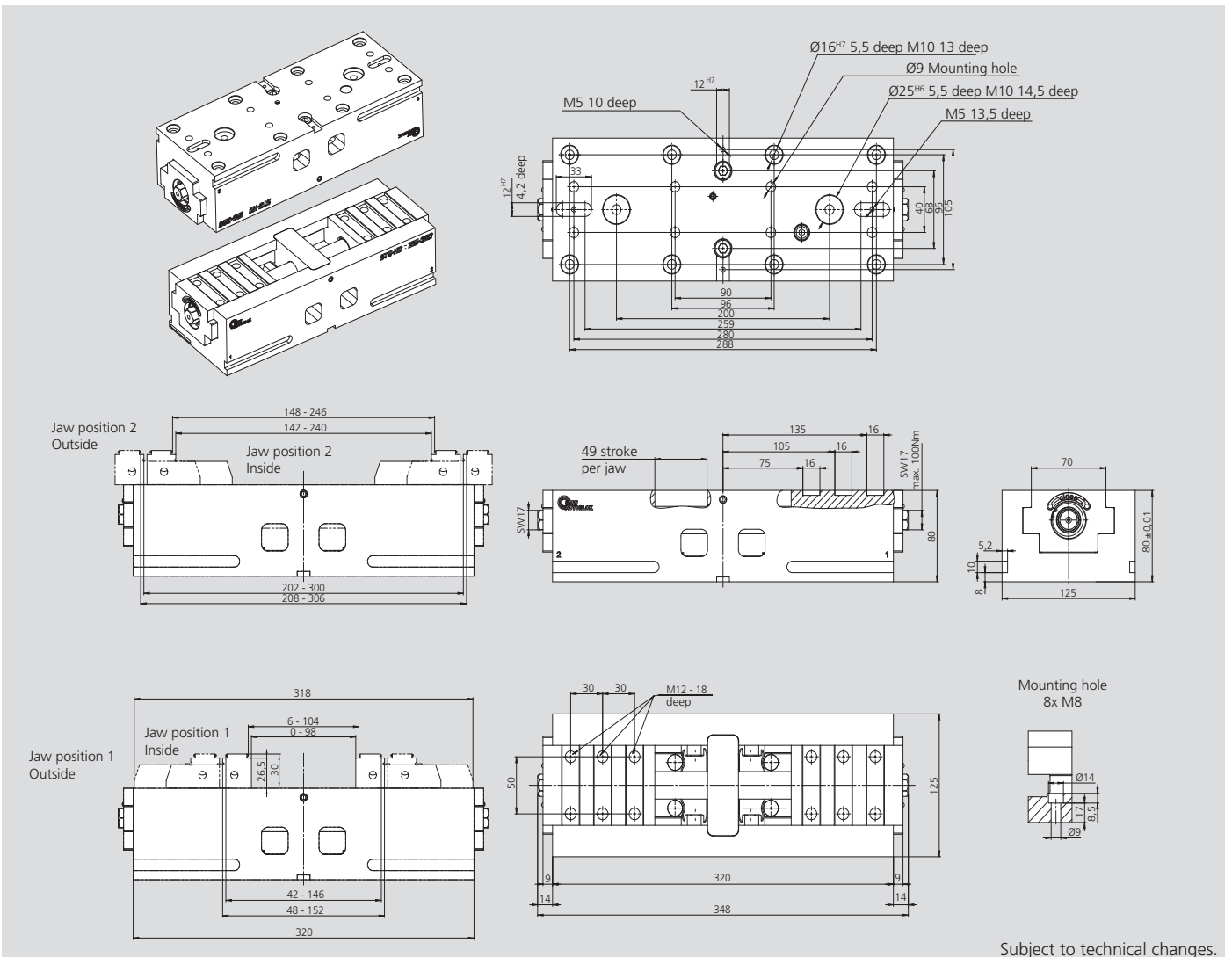
Technical features

- Central clamping
- Manual actuation on both sides (SW 17)
- Clamping range 0 until 246 mm
- Clamping force up to 60 kN (100 Nm)
- Jaw width 125 mm
- Interface for zero point clamping systems APS / WPS / ZeroAct and Lang 96 mm as a standard



Standard equipment

5-axis vise with wrench, BASIC: 1 pair top jaws Gripper
 PREMIUM: SinterGrip top jaws with 14 pieces SinterGrip clamping inserts and 14 pieces protective cover and mounting bolts

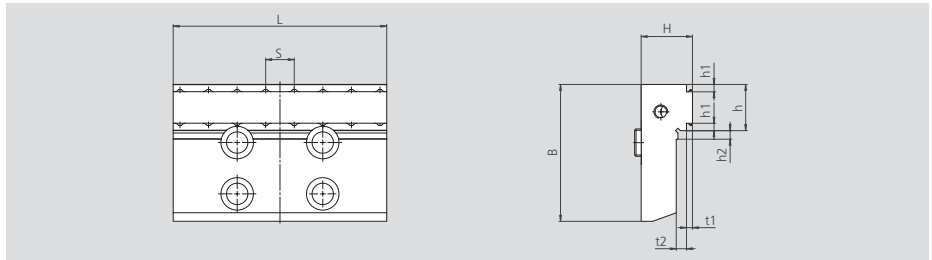


Subject to technical changes.

Order review

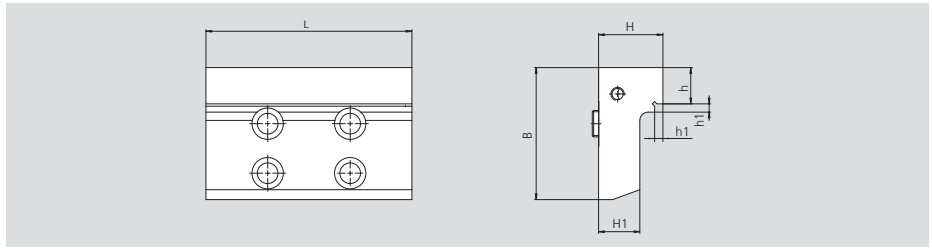
| Type | Clamping range [mm] | Id. No. |
|--|---------------------|---------|
| ST5-HDS 125-320 BASIC with gripper jaws | 0-246 | 466122 |
| ST5-HDS 125-320 PREMIUM with SinterGrip jaws STD | 0-246 | 466123 |
| ST5-HDS 125-320 PREMIUM with SinterGrip jaws ALU | 0-246 | 466123A |
| ST5-HDS 125-320 PREMIUM with SinterGrip jaws HRC | 0-246 | 466123H |
| ST5-HDS 125-320 without top jaws | 0-246 | 466230 |

ST5-HDS top jaws BASIC gripper (set with 2 jaws)



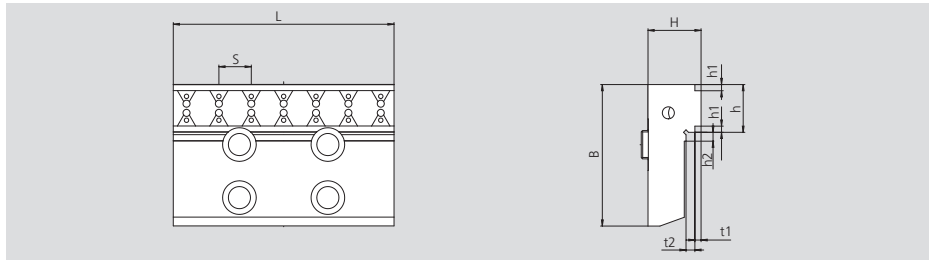
| Type | Id. No. | | L | B | H | S | h | h1 | h2 | t1 | t2 |
|-------------|---------|---------|-------|----|----|-----------|----|----|----|-----|----|
| ST5-HDS 125 | 466298 | Top jaw | 124.8 | 80 | 30 | 16.7 (7x) | 27 | 3 | 5 | 3.5 | 5 |

ST5-HDS top jaws smooth (set with 2 jaws)



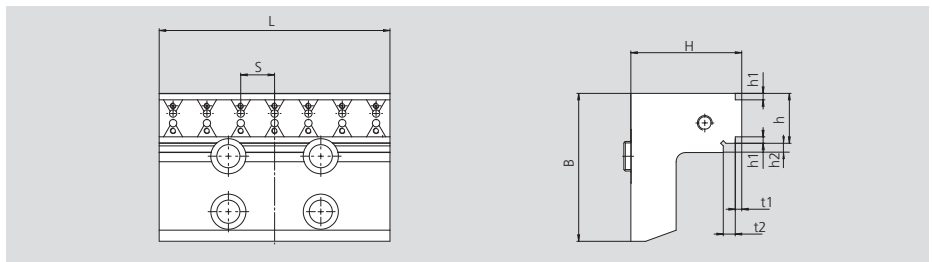
| Type | Id. No. | | L | B | H | H1 | h1 | h |
|-------------|---------|---------|-------|----|----|----|----|----|
| ST5-HDS 125 | 466304 | Top jaw | 124.8 | 80 | 39 | 25 | 5 | 22 |

ST5-HDS top jaws PREMIUM (set with 2 jaws)



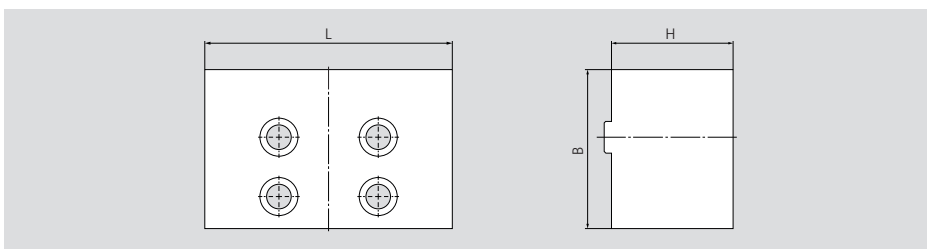
| Type | Id. No. | | L | B | H | S | h | h1 | h2 | t1 | t2 | SinterGrip per jaw |
|-------------|---------|---------|-------|----|----|-----------|----|----|----|-----|----|--------------------|
| ST5-HDS 125 | 466300 | Top jaw | 124.8 | 80 | 30 | 18.3 (7x) | 27 | 3 | 5 | 3.5 | 5 | 7+7 |

ST5-HDS top jaws PREMIUM higher version (set with 2 jaws)



| Type | Id. No. | | L | B | H | S | h | h1 | h2 | t1 | t2 | SinterGrip per jaw |
|-------------|---------|---------|-------|----|----|-----------|----|----|----|-----|-----|--------------------|
| ST5-HDS 125 | 466302 | Top jaw | 124.8 | 80 | 60 | 18.3 (7x) | 27 | 3 | 5 | 3.5 | 6.5 | 7+7 |

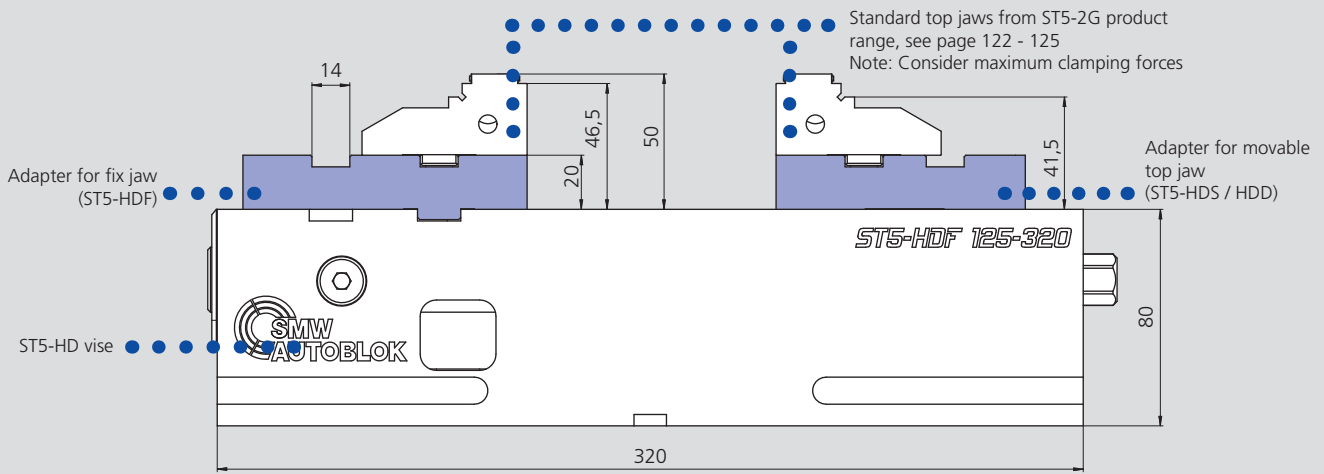
ST5-HDS soft top jaws, high design



| Type | Id. No. | L | B | H |
|-------------|----------|------|----|------|
| ST5-HDS 125 | 466460-2 | 79.8 | 55 | 52.7 |

Adapter for ST5-2G top jaws for the use of ST5-2G top jaws on ST5-HD vises

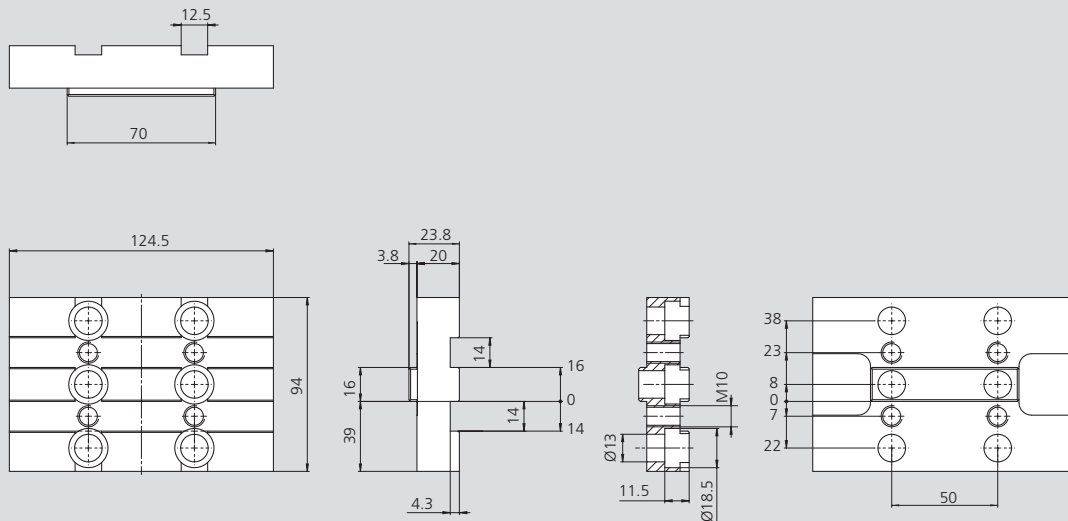
Application example:



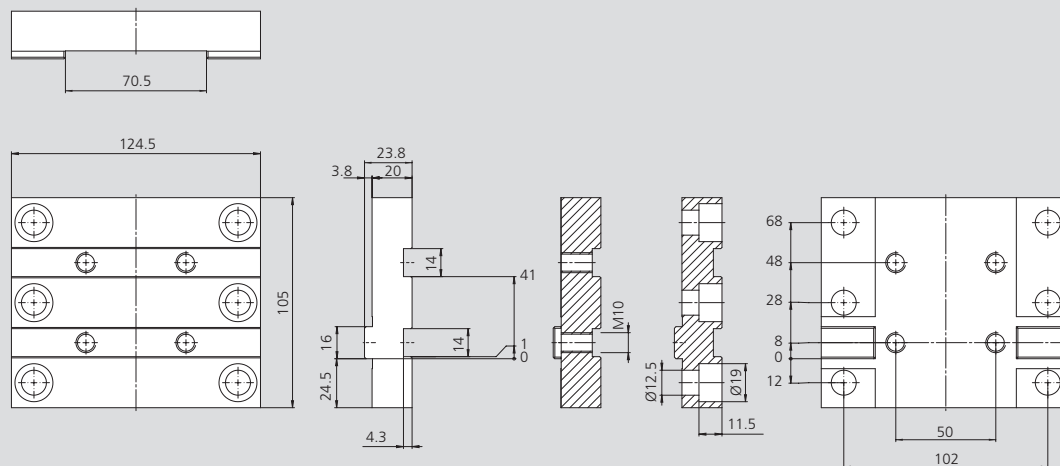
ST5-HD vise not included in scope of delivery.

Adapter for movable top jaw (ST5-HDS / HDD)

Subject to technical changes.



Adapter for fix jaw (ST5-HDF)



Type

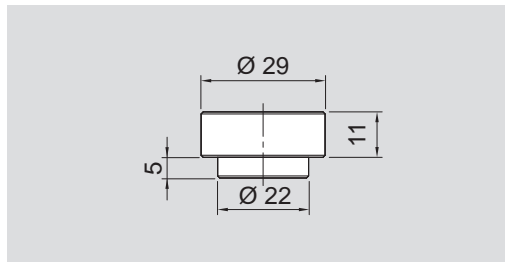
- 1 Adapter for movable top jaw
- 1 Adapter for fix jaw

Id. No.

- 466229
- 466297

- Grip inserts for GT5 / ST5-2G
- Stop pins ALB

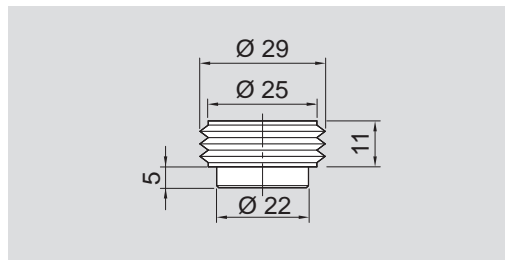
Grip insert smooth, height 11 mm



Smooth
Height 11 mm
Set consisting of 4 grippers
and 4 fixing screws

| Type | Id. No. |
|--------------|----------|
| GT5 / ST5-2G | 58906114 |

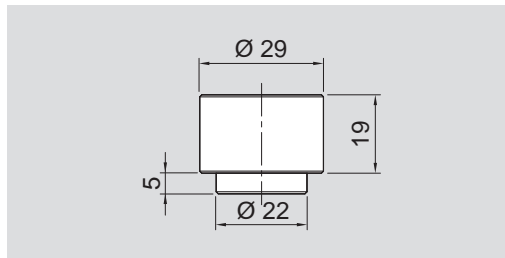
Grip insert serrated, height 11 mm



Serrated
Height 11 mm
Set consisting of 4 grippers
and 4 fixing screws

| Type | Id. No. |
|--------------|----------|
| GT5 / ST5-2G | 58906124 |

Grip insert smooth, height 19 mm

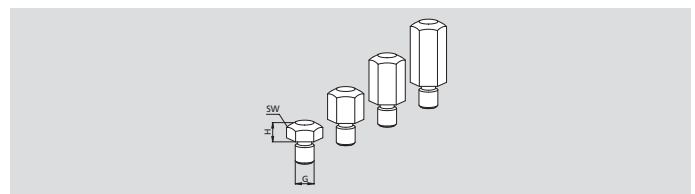


Smooth
Height 19 mm
Set consisting of 4 grippers
and 4 fixing screws

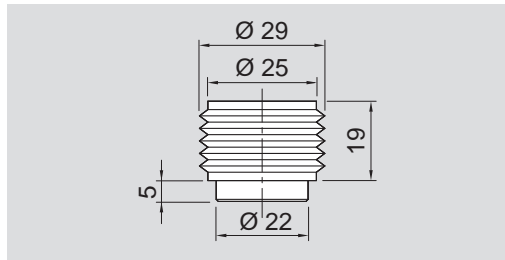
| Type | Id. No. |
|--------------|----------|
| GT5 / ST5-2G | 58906214 |

Stop pins ALB

| SMW-AUTOBLOK Type | Id. No. | G | H | SW |
|-------------------|---------|----|----|----|
| ALB 605 | 016513 | M6 | 5 | 10 |
| ALB 610 | 016511 | M6 | 10 | 10 |
| ALB 615 | 016512 | M6 | 15 | 10 |
| ALB 620 | 017602 | M6 | 20 | 10 |



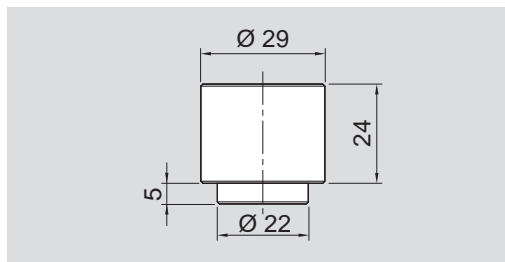
Grip insert serrated, height 19 mm



Serrated
Height 19 mm
Set consisting of 4 grippers
and 4 fixing screws

| Type | Id. No. |
|--------------|----------|
| GT5 / ST5-2G | 58906224 |

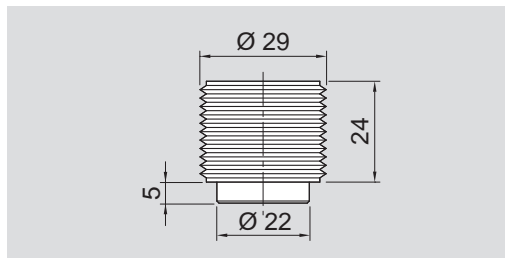
Grip insert smooth, height 24 mm



Smooth
Height 24 mm
Set consisting of 4 grippers
and 4 fixing screws

| Type | Id. No. |
|--------------|----------|
| GT5 / ST5-2G | 58906314 |

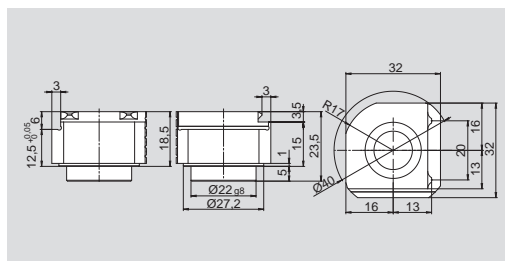
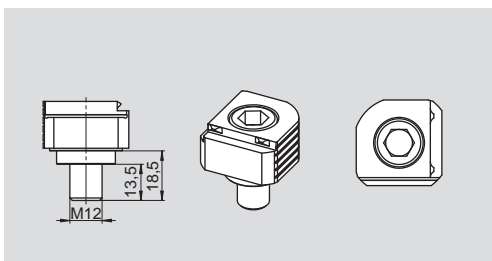
Grip insert serrated, height 24 mm



Serrated
Height 24 mm
Set consisting of 4 grippers
and 4 fixing screws

| Type | Id. No. |
|--------------|----------|
| GT5 / ST5-2G | 58906324 |

Grip insert Multigrip 12.5 mm



Multigrip
Height 12.5 mm
Set consisting of 1 gripper
and 1 fixing screw

| Type | Id. No. |
|--------------|---------|
| GT5 / ST5-2G | 466228 |