

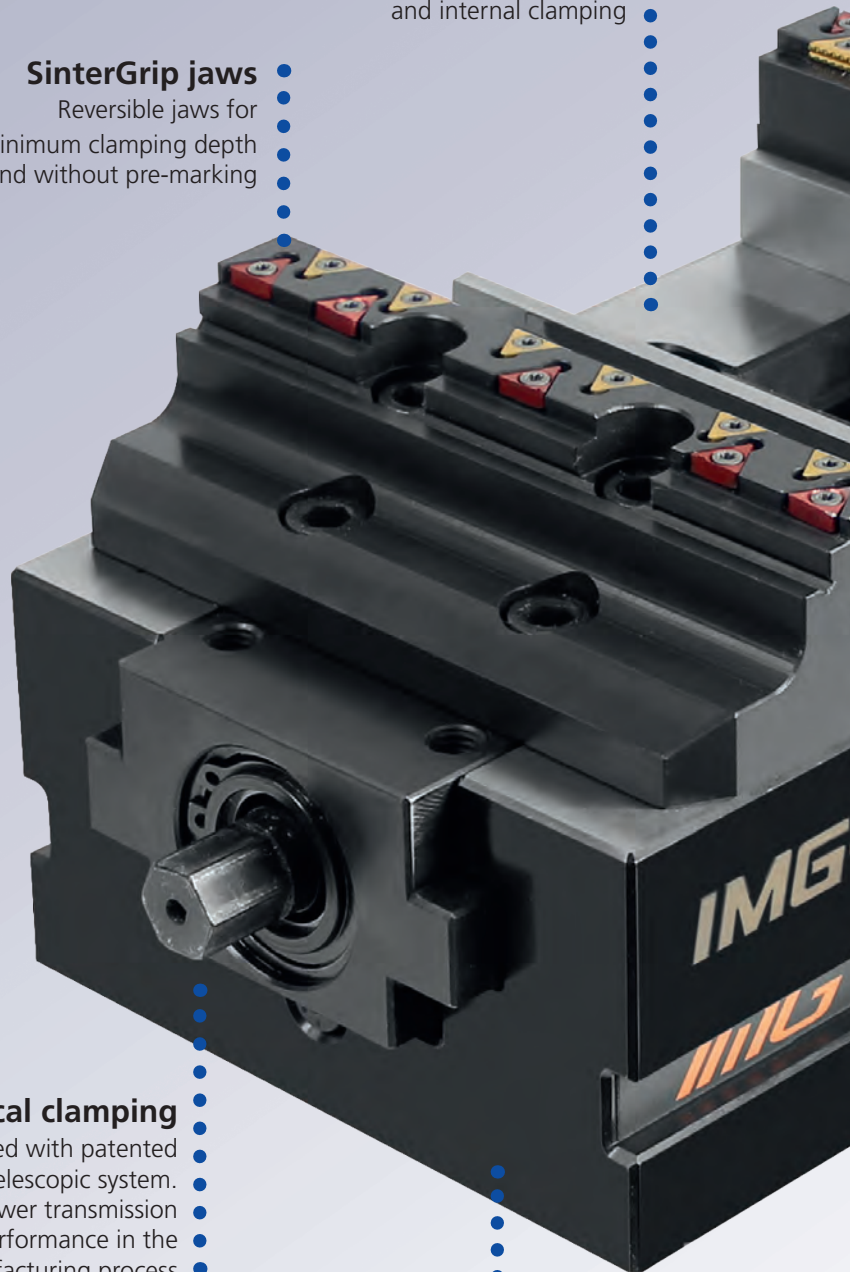
# IMG

## Self-centering vise



**SinterGrip jaws**  
Reversible jaws for  
minimum clamping depth  
and without pre-marking

**Wide clamping range**  
Maximum flexibility for external  
and internal clamping



**Mechanical clamping**  
Fully protected with patented  
telescopic system.  
The large power transmission  
allows high performance in the  
manufacturing process

**Interface**  
for Zero Point clamping  
systems and mounting  
holes as standard



Find out more

# ▶ from SMW-AUTOBLOK



- **Fully protected**  
with patented telescopic system

- **Nitreg® treatment**

- **Through-holes**  
for frontal clamping

- **Ideal**  
for automation and palletizing systems

- **Flexible mounting**  
on machine tool pallet using clamps (optional)

**Double clamping jaw**  
(for double clamping)



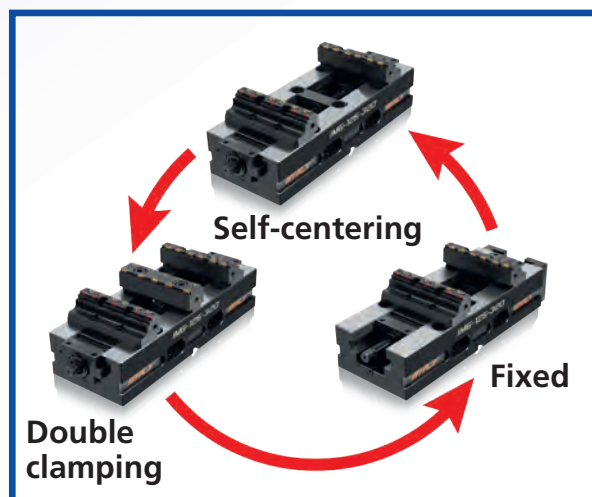
**Retainer plate**  
(for fixed clamping)



- **Very large drainage slots**  
for coolant and chips

- **Treated and precision ground guides**  
for maximum accuracy and repeatability

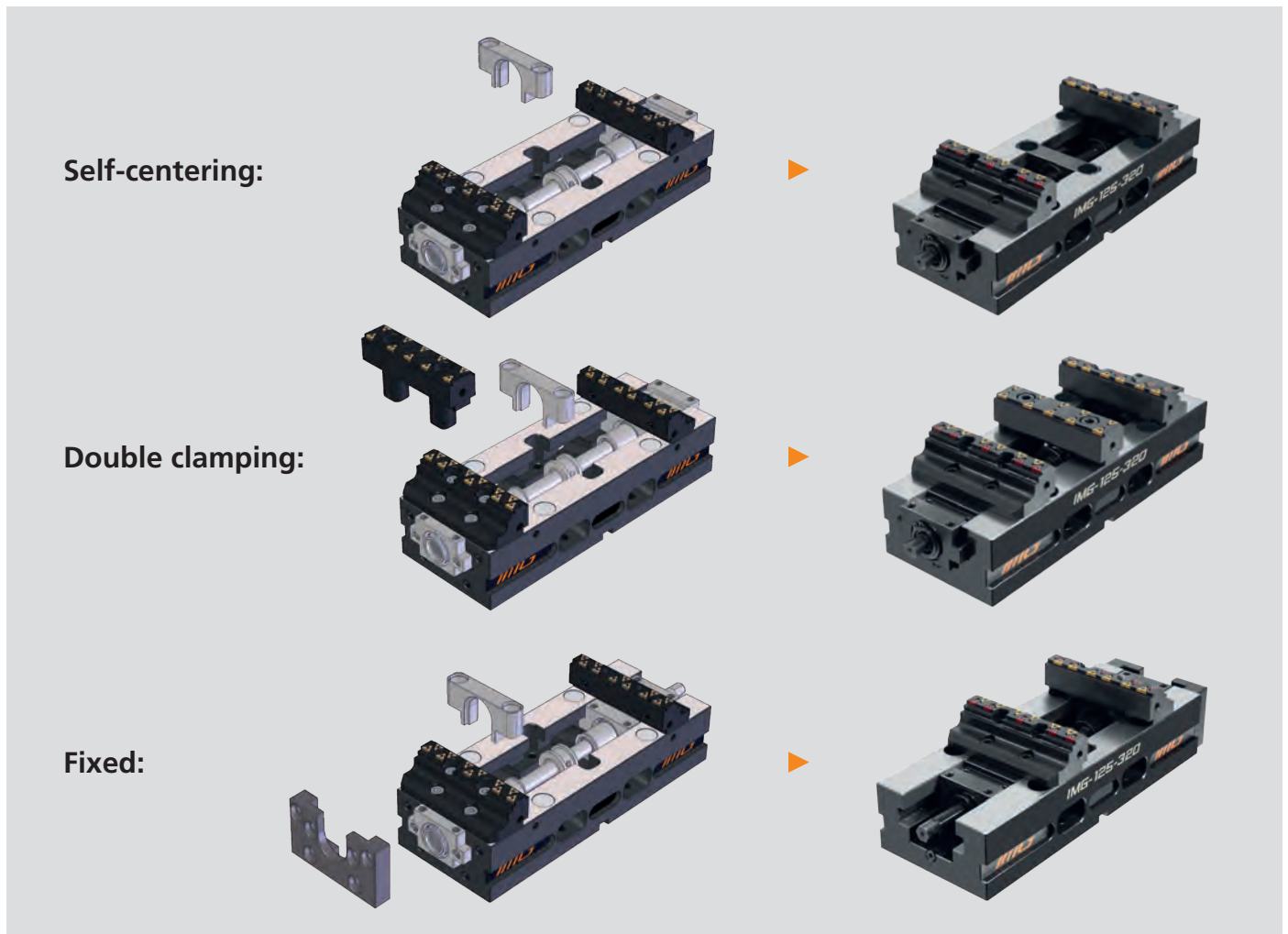
- **Parallels**  
with quick change CLAK System



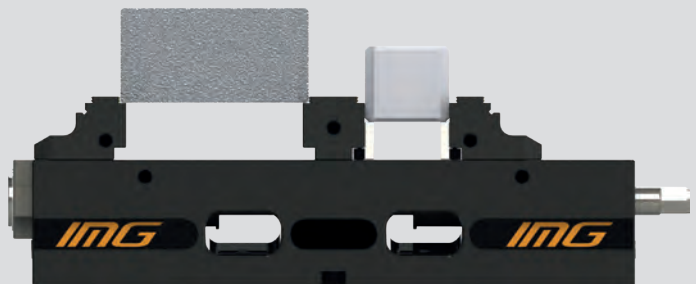
- Sealed – Protected spindle
- Double clamping

### Modular system

The IMG self-centering vises can be easily transformed into fixed vises or double clamping vises.



The double clamping vises have a completely compensating mechanism (until zero), therefore it is possible to clamp 2 pieces of different sizes.

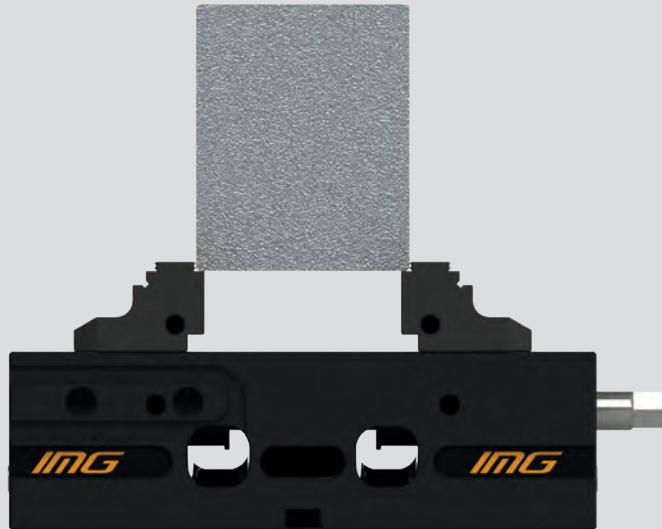


- Sealed – Protected spindle
- Double clamping

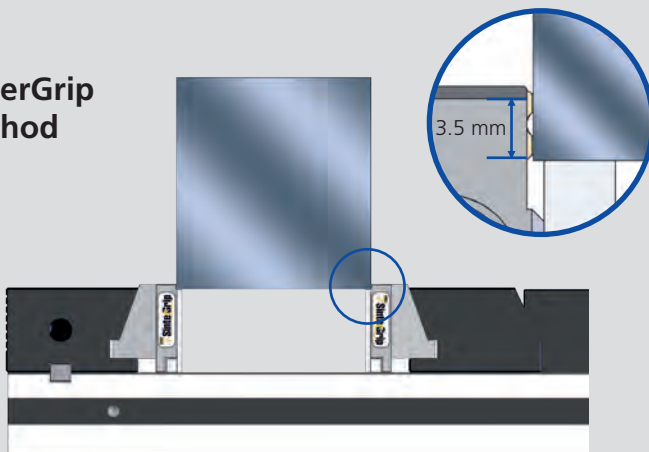
High clamping performance

IMG vises clamp up to 50 kN. The clamping force combined with the patented SinterGrip system guarantees high performance.

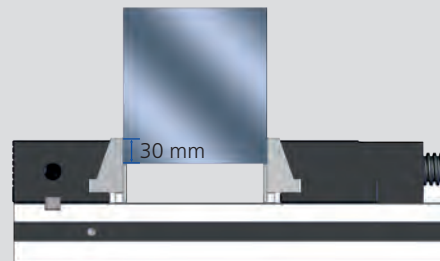
OP 10



SinterGrip method



Conventional method



OP 20



- Double clamping / Fixed
- Patented protected screw



### Applications / Customer Benefits

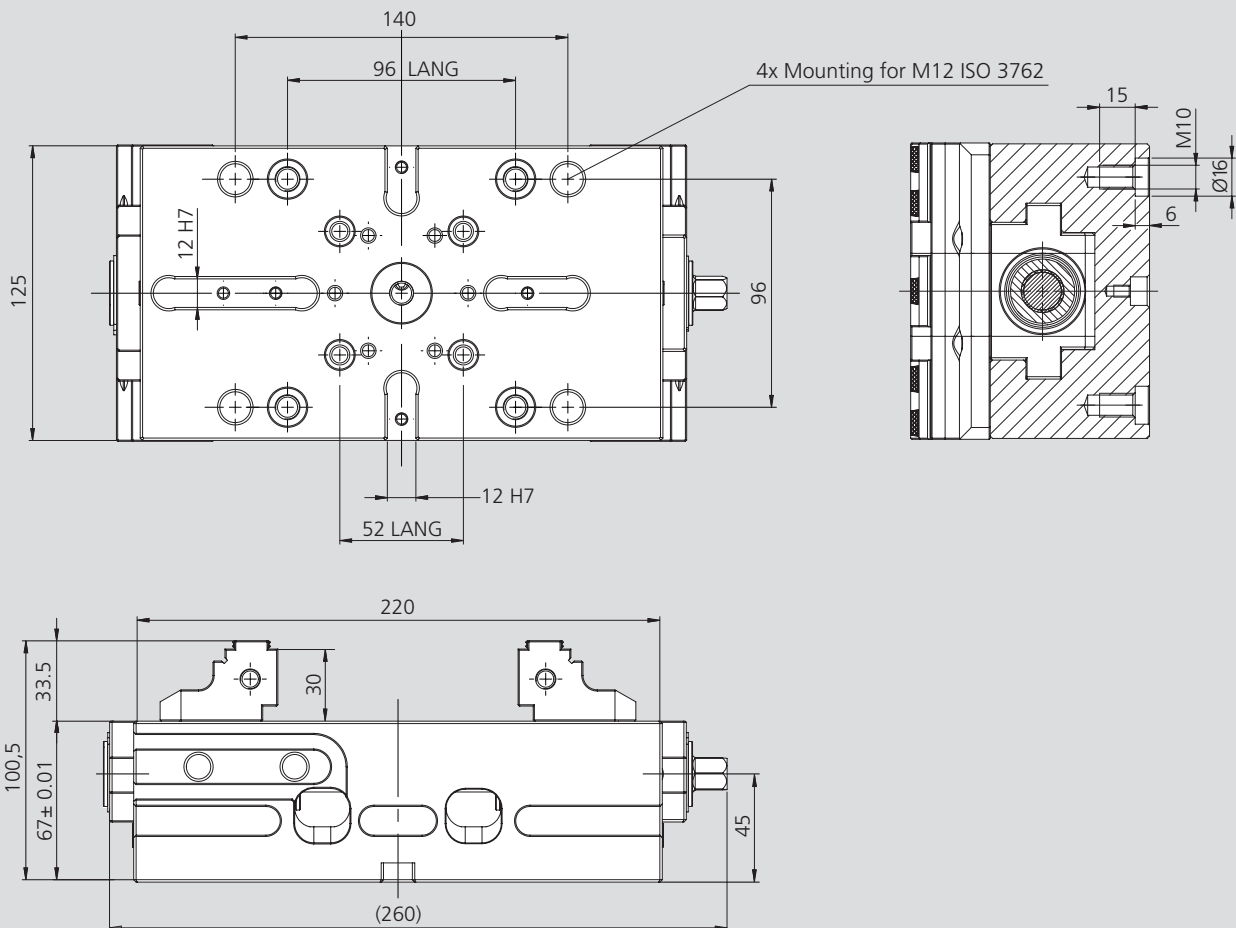
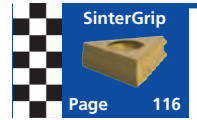
- High precise self-centering clamping with high repeatability
- Fully protected
- Compact design for better accessibility
- Very large drainage slots
- Jaws with SinterGrip clamping inserts for minimum workpiece clamping depth without pre-marking
- Large clamping range
- Ideal for OP 10 and OP 20

### Technical features

- Self-centering clamping
- Clamping force up to 40 kN (80 Nm)
- Jaw width 125 mm
- Interface for zero point systems APS / WPS and Lang 52 / 96 mm as standard

### Standard equipment

Wrench, jaws, SinterGrip inserts

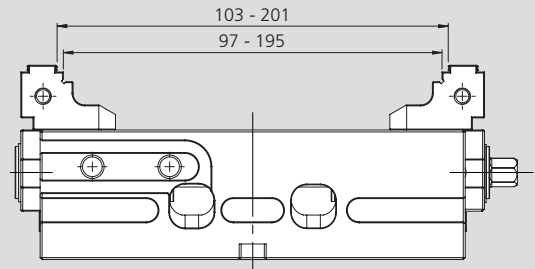
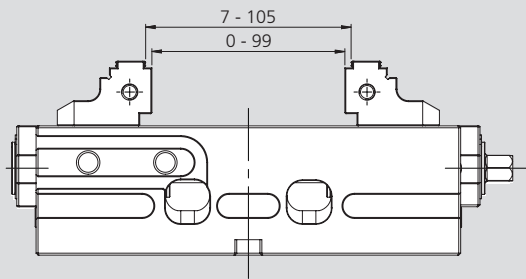


Subject to technical changes.

Type	Id. No.	Weight [kg]
IMG 125-220 with SinterGrip jaws <b>STD</b>	77583511	15
IMG 125-220 with SinterGrip jaws <b>ALU</b>	77583512	15
IMG 125-220 with SinterGrip jaws <b>HRC</b>	77583513	15
Clamping pins M12 APS 140 (Type A / B)	46162355 / 46162356	0.3
Clamping pins M12 APS 190 (Type A)	46162635	0.85

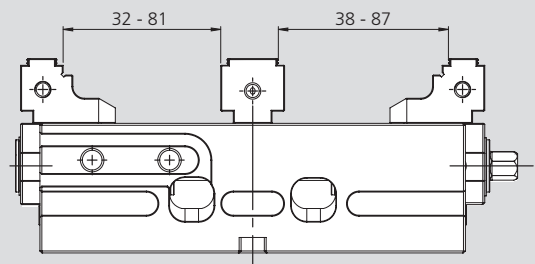
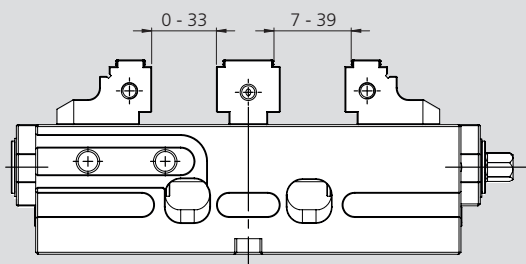
- Double clamping / Fixed
- Patented protected screw

Self-centering clamping

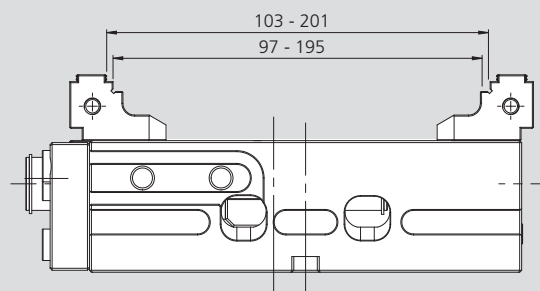
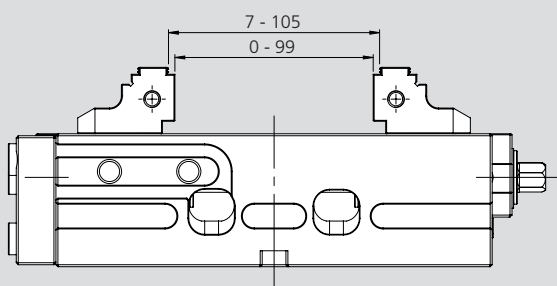


2

Double clamping



Fixed clamping



- Double clamping / Fixed
- Patented protected screw

### Applications / Customer Benefits

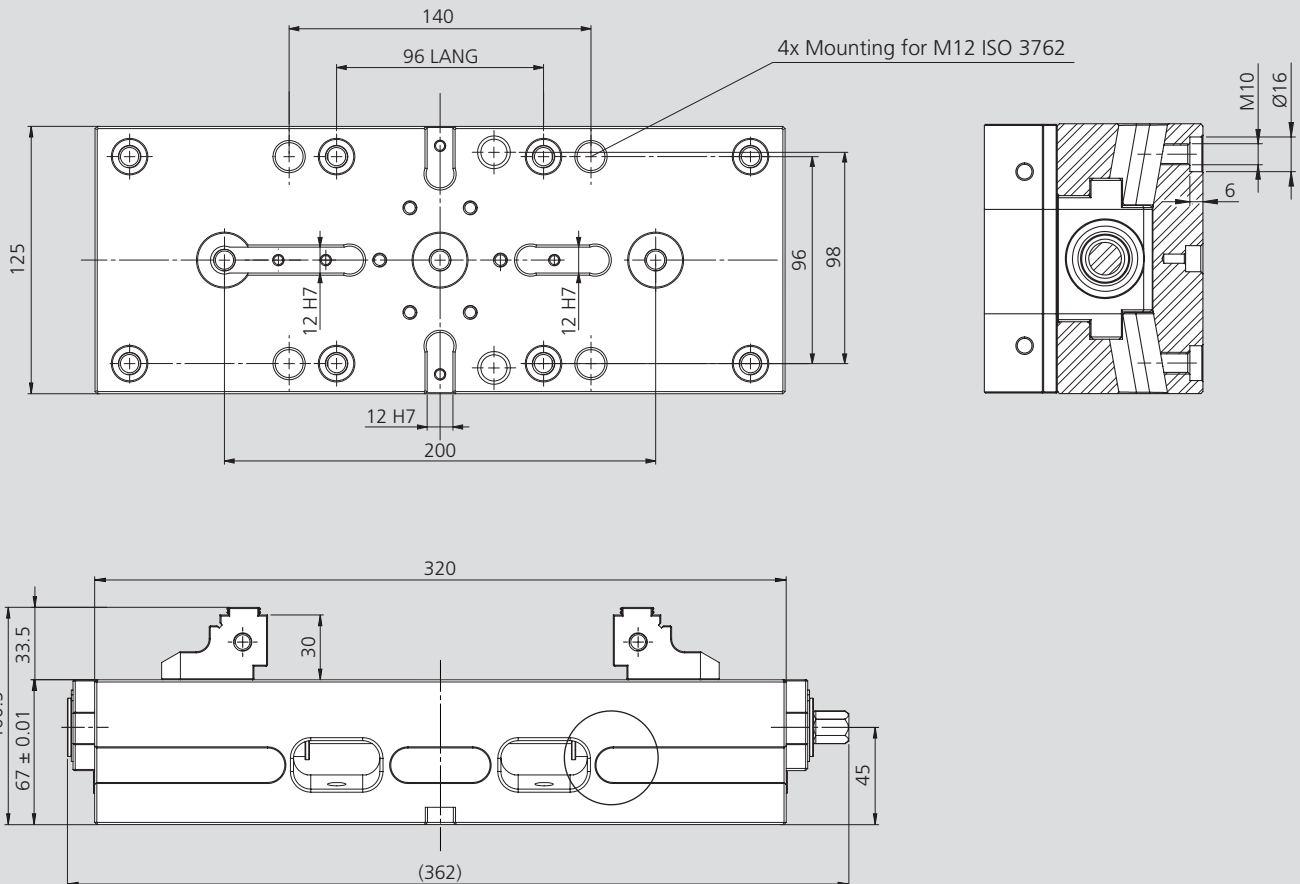
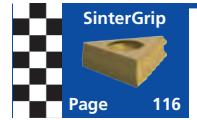
- High precise self-centering clamping with high repeatability
- Fully protected
- Compact design for better accessibility
- Very large drainage slots
- Jaws with SinterGrip clamping inserts for minimum workpiece clamping depth without pre-marking
- Large clamping range
- Ideal for OP 10 and OP 20

### Technical features

- Self-centering clamping
- Clamping force up to 40 kN (80 Nm)
- Jaw width 125 mm
- Interface for zero point systems APS / WPS and Lang 96 mm as standard

### Standard equipment

Wrench, jaws, SinterGrip inserts

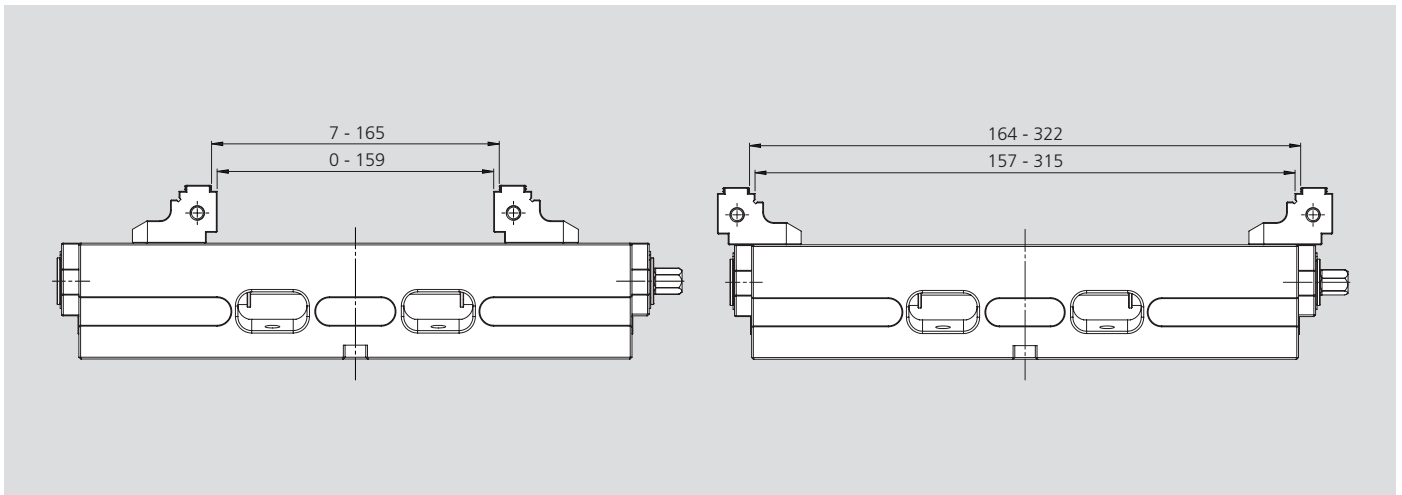


Subject to technical changes.

Type	Id. No.	Weight [kg]
IMG 125-320 with SinterGrip jaws <b>STD</b>	77583521	20
IMG 125-320 with SinterGrip jaws <b>ALU</b>	77583522	20
IMG 125-320 with SinterGrip jaws <b>HRC</b>	77583523	20
Clamping pins M12 APS 140 (Type A / B)	46162355 / 46162356	0.3
Clamping pins M12 APS 190 (Type A)	46162635	0.85

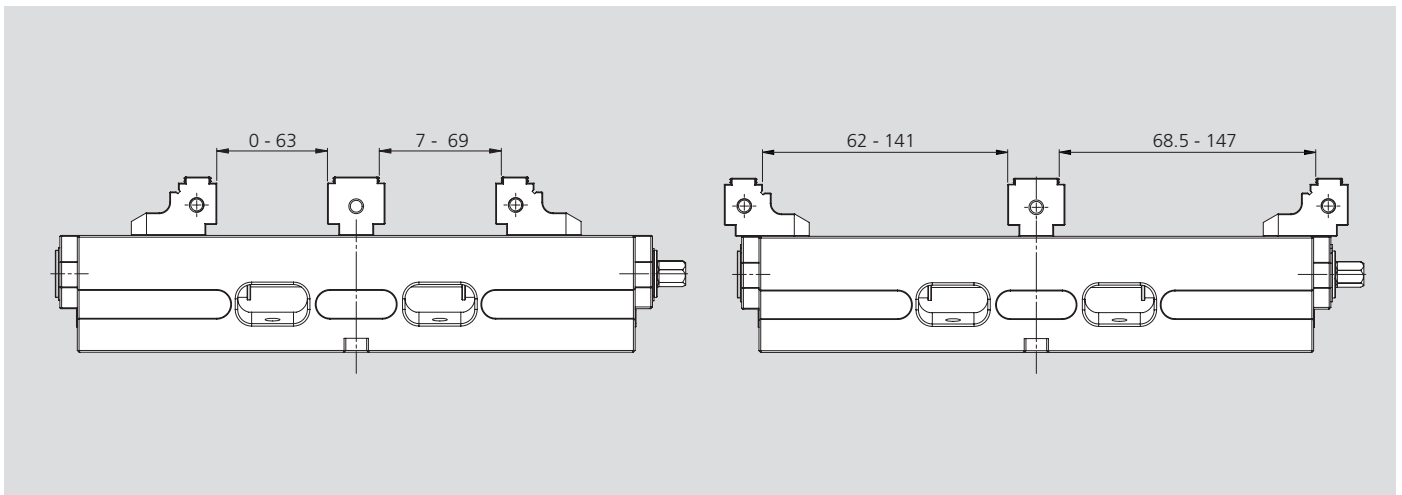
- Double clamping / fixed clamping
- Patented protected screw

Self-centering clamping

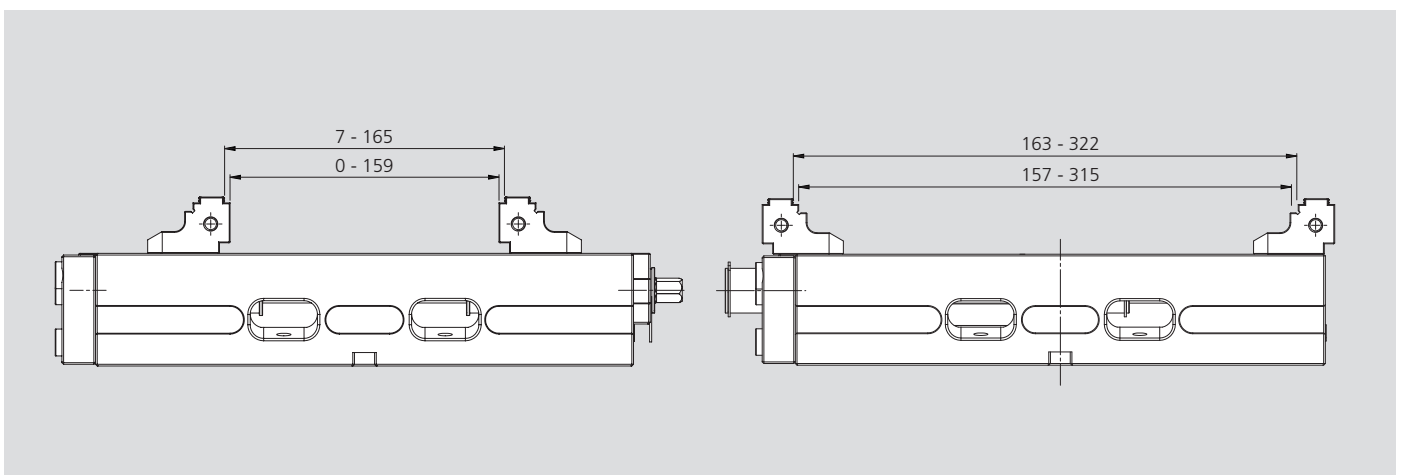


2

Double clamping



Fixed clamping





- Double clamping / Fixed
- Patented protected screw



### Applications / Customer Benefits

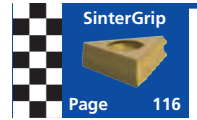
- High precise self-centering clamping with high repeatability
- Fully protected
- Compact design for better accessibility
- Very large drainage slots
- Jaws with SinterGrip clamping inserts for minimum workpiece clamping depth without pre-marking
- Large clamping range
- Ideal for OP 10 and OP 20

### Technical features

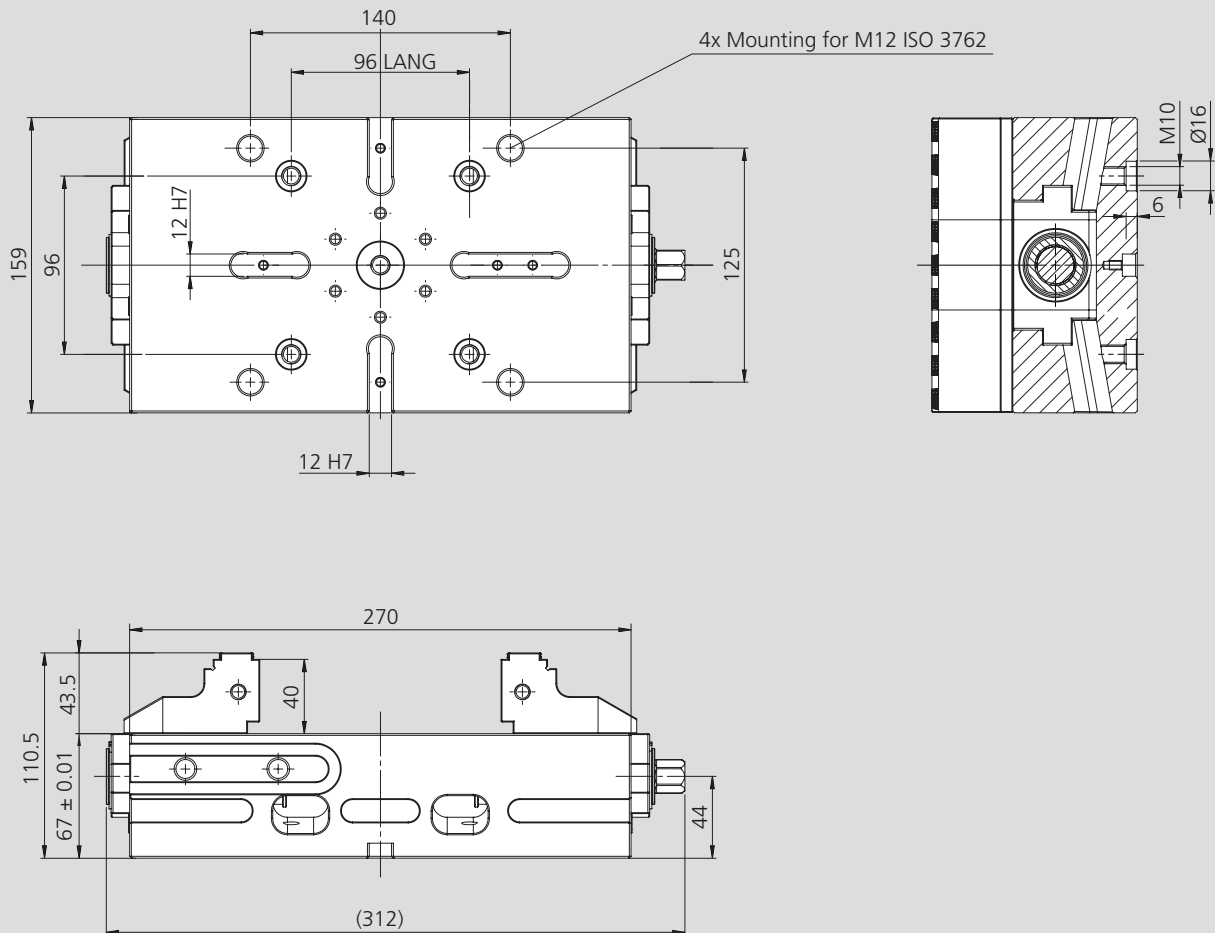
- Self-centering clamping
- Clamping force up to 55 kN (120 Nm)
- Jaw width 160 mm
- Interface for zero point systems APS / WPS and Lang 96 mm as standard

### Standard equipment

Wrench, jaws, SinterGrip inserts



Page 116

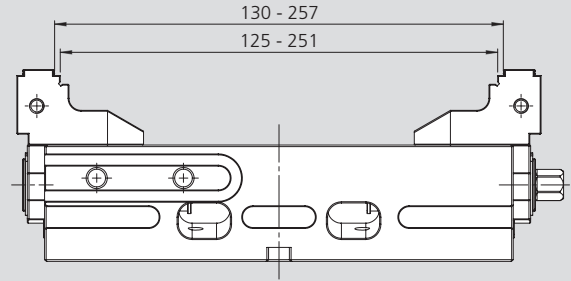
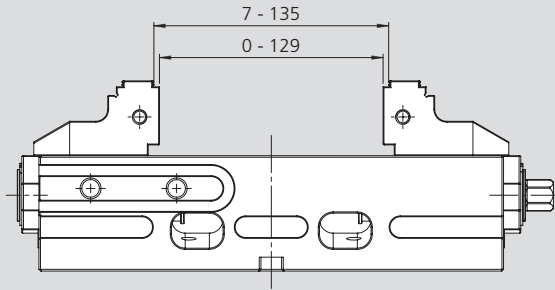


Subject to technical changes.

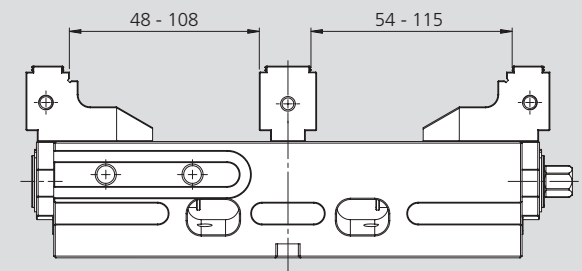
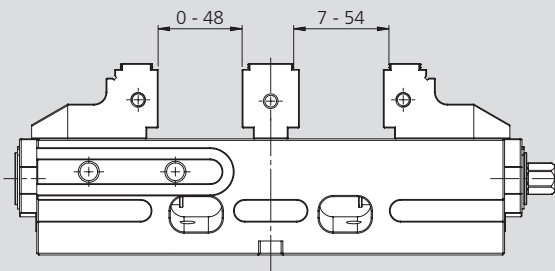
Type	Id. No.	Weight [kg]
IMG 160-270 with SinterGrip jaws <b>STD</b>	77583611	22
IMG 160-270 with SinterGrip jaws <b>ALU</b>	77583612	22
IMG 160-270 with SinterGrip jaws <b>HRC</b>	77583613	22
Clamping pins M12 APS 140 (Type A / B)	46162355 / 46162356	0.3
Clamping pins M12 APS 190 (Type A)	46162635	0.85

- Double clamping / fixed clamping
- Patented protected screw

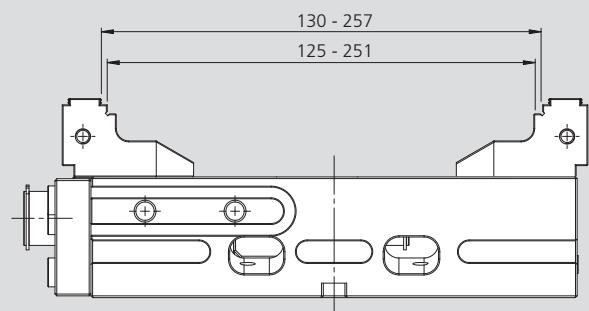
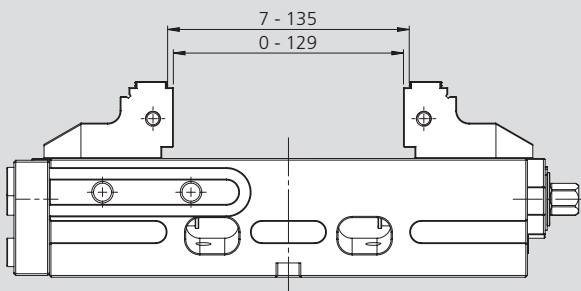
Self-centering clamping



Double clamping



Fixed clamping



- Double clamping / Fixed
- Patented protected screw

### Applications / Customer Benefits

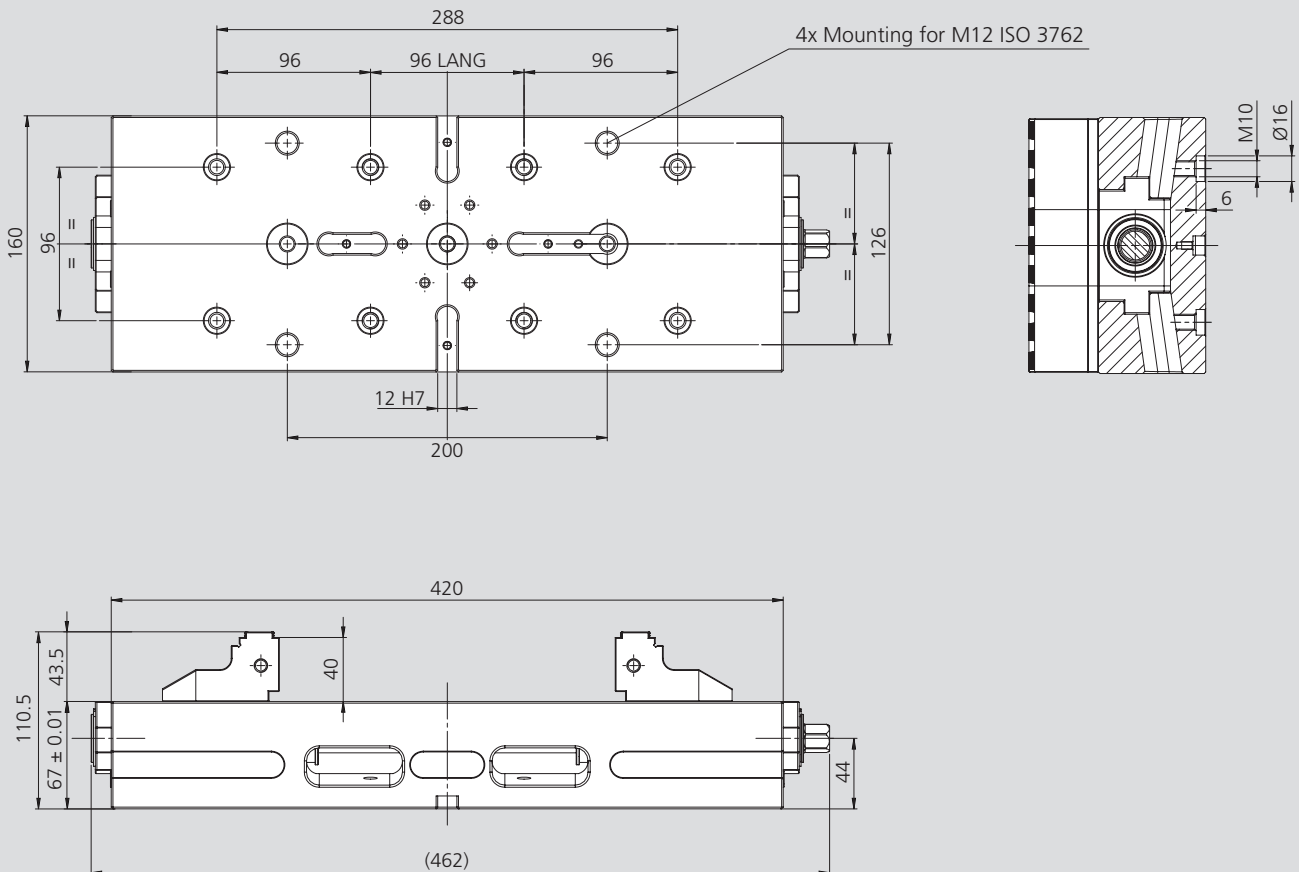
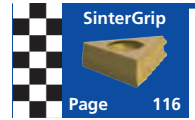
- High precise self-centering clamping with high repeatability
- Fully protected
- Compact design for better accessibility
- Very large drainage slots
- Jaws with SinterGrip clamping inserts for minimum workpiece clamping depth without pre-marking
- Large clamping range
- Ideal for OP 10 and OP 20

### Technical features

- Self-centering clamping
- Clamping force up to 55 kN (120 Nm)
- Jaw width 160 mm
- Interface for zero point systems APS / WPS and Lang 96 mm as standard

### Standard equipment

Wrench, jaws, SinterGrip inserts

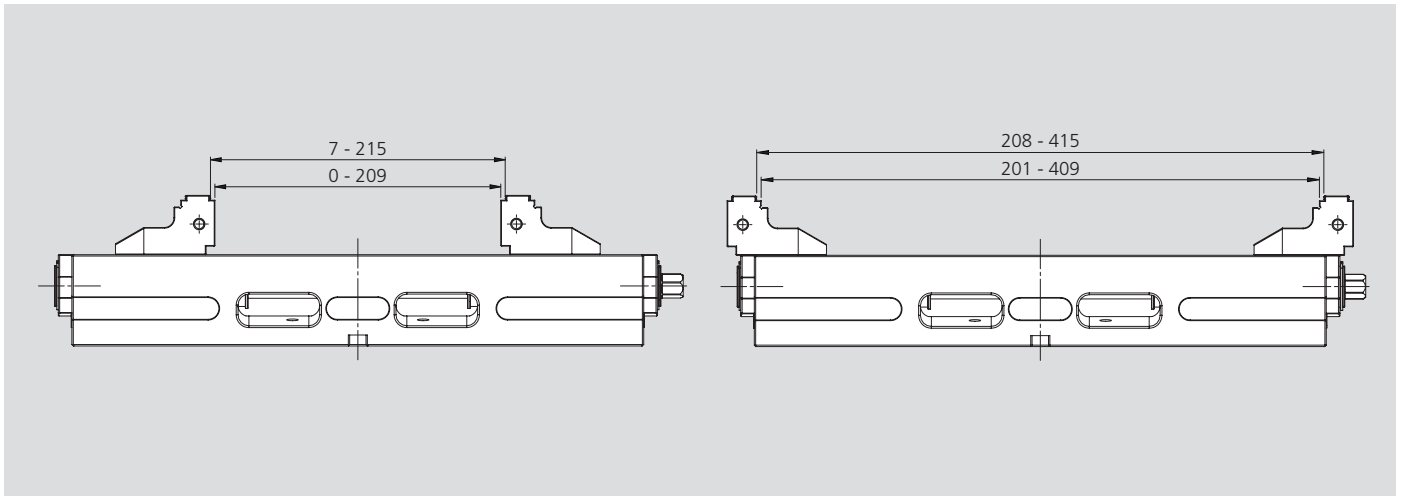


Subject to technical changes.

Type	Id. No.	Weight [kg]
IMG 160-420 with SinterGrip jaws <b>STD</b>	77583621	32
IMG 160-420 with SinterGrip jaws <b>ALU</b>	77583622	32
IMG 160-420 with SinterGrip jaws <b>HRC</b>	77583623	32
Clamping pins M12 APS 140 (Type A / B)	46162355 / 46162356	0.3
Clamping pins M12 APS 190 (Type A)	46162635	0.85

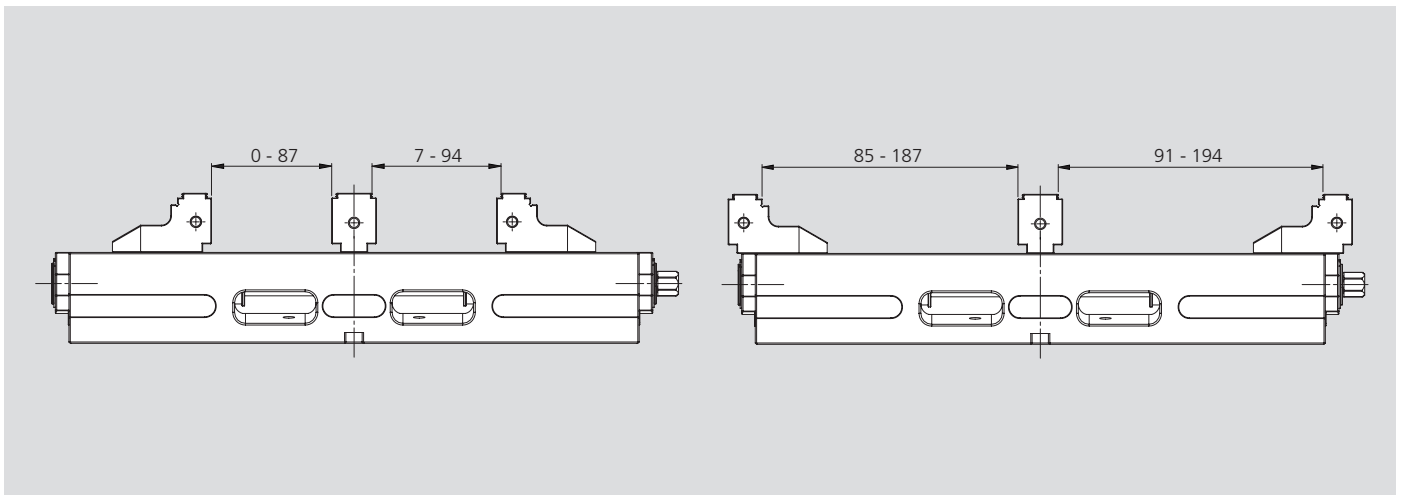
- Double clamping / fixed clamping
- Patented protected screw

Self-centering clamping

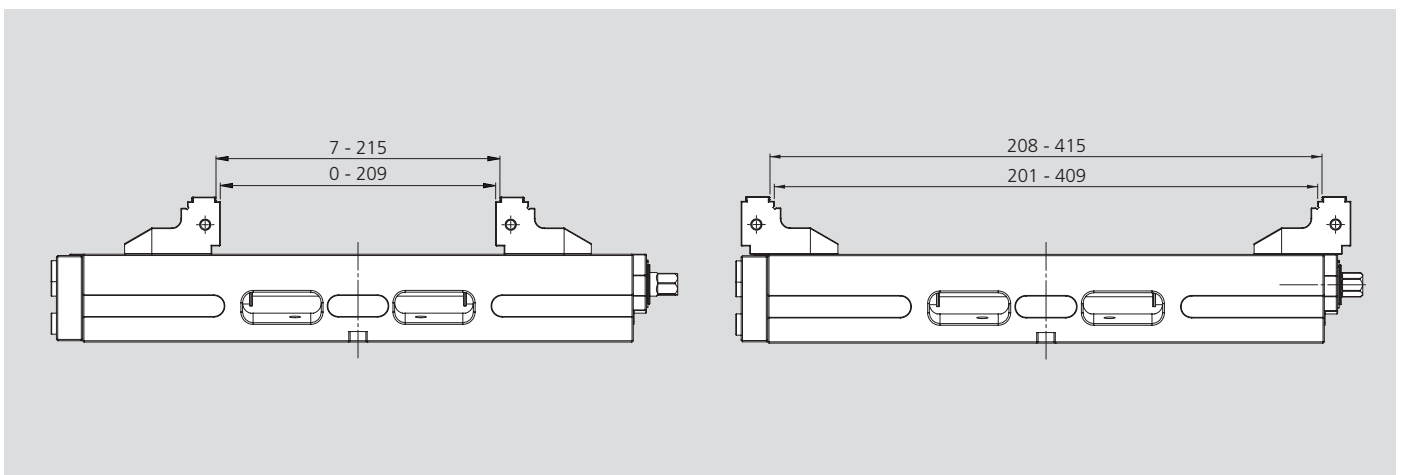


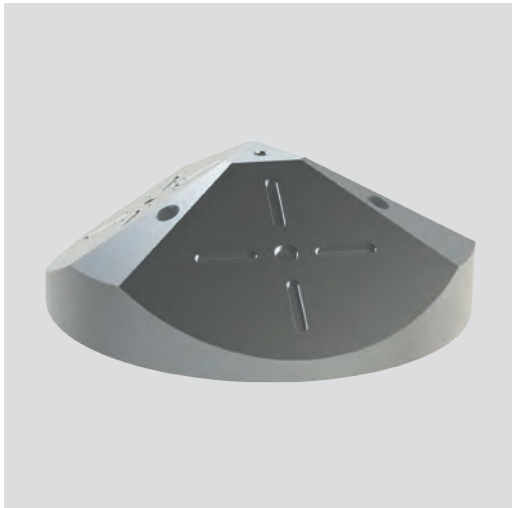
2

Double clamping



Fixed clamping





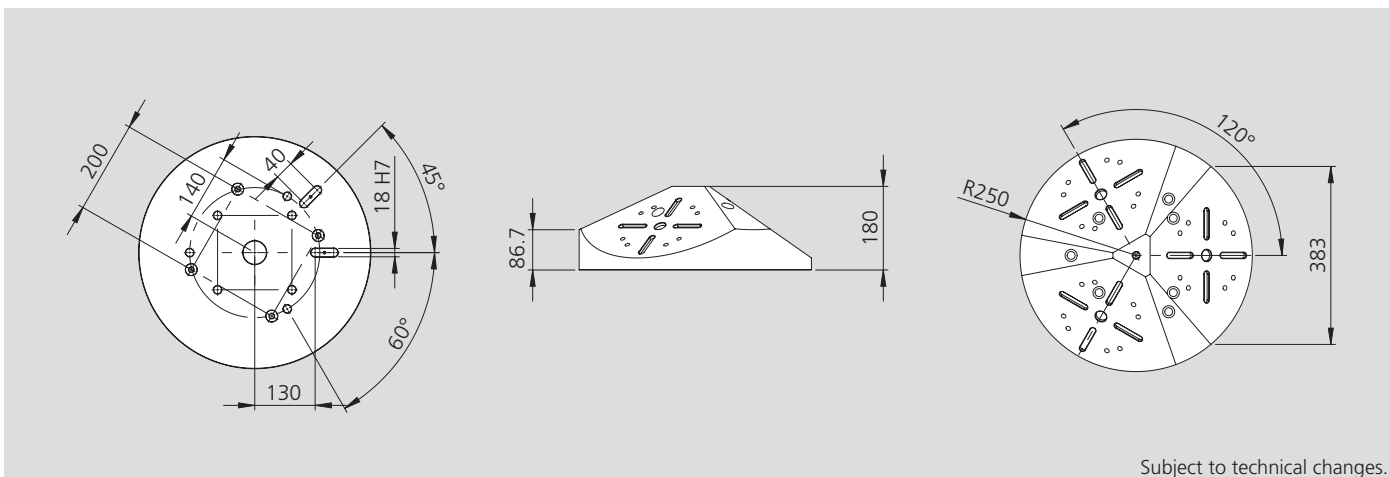
### Applications / Customer Benefits

- Ideal for 5 axis machines
- Compact design
- Possibility to be mounted directly on machine tools with radial slots at 45 / 60 degrees
- Possibility to be mounted directly on single plate or DUO APS (pitch 200)

### Technical features

- Material: ALU

On request:  
Positioning keys for IMG,  
APS pins,  
positioning keys for machine tool



Subject to technical changes.

Type	Id. No.	Weight [kg]
IMG 125-220 ALU pyramid	58353210	55

### Application example



**Applications / Customer Benefits**

- Ideal for 5 axis machines
- Compact design
- Possibility to be mounted directly on machine tools with T slots
- Possibility to be mounted directly on single plate or DUO APS (pitch 200)

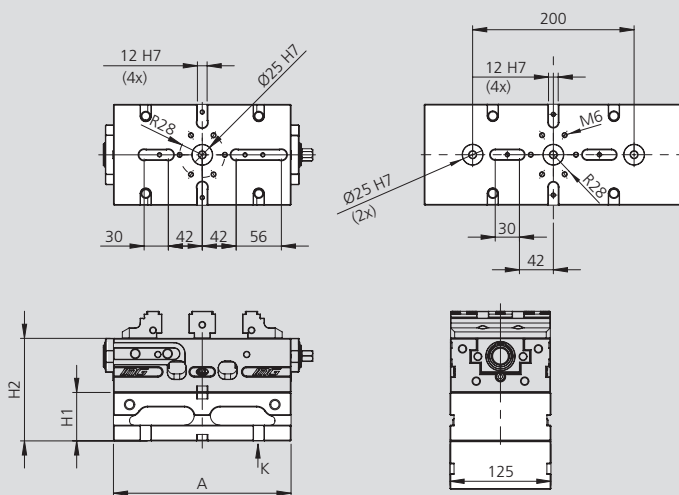
**Technical features**

- Material: Steel

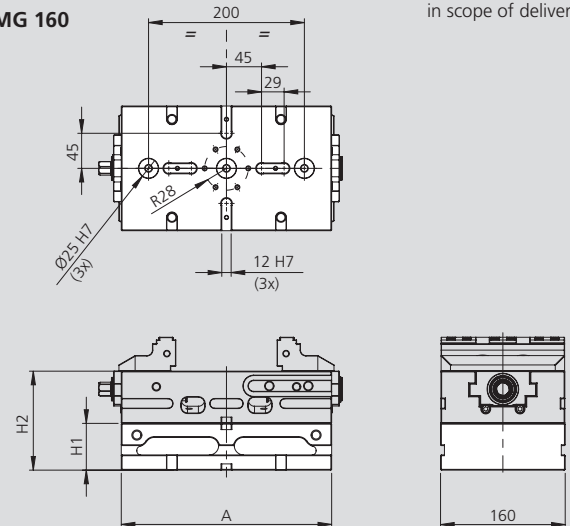
On request:  
Positioning keys for IMG,  
APS pins,  
positioning keys for machine tool



IMG 125



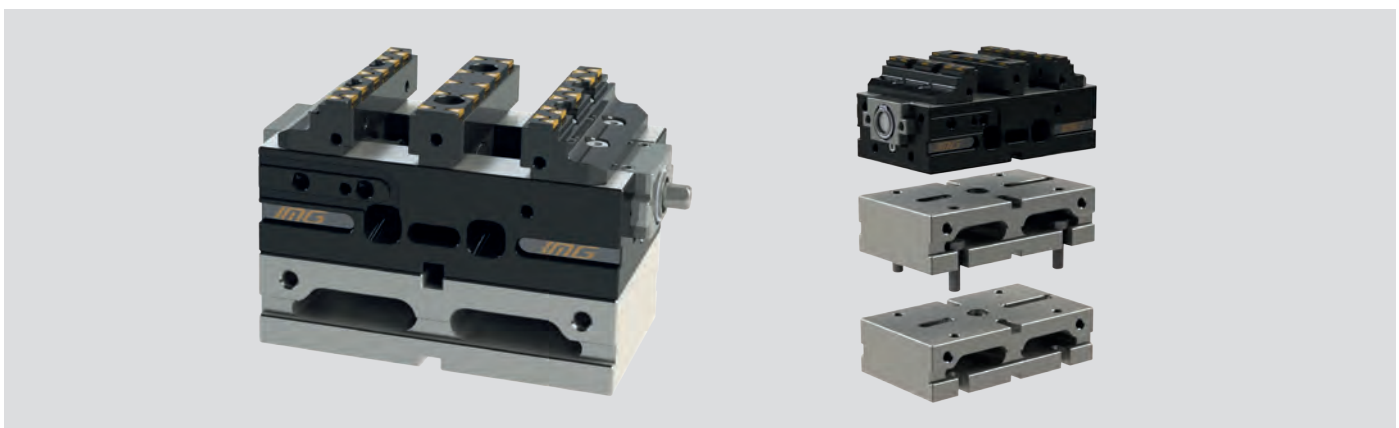
IMG 160



IMG not included in scope of delivery.

Type	Id. No.	H1 [mm]	H2 [mm]	A [mm]	Weight [kg]
IMG 125 Riser	58352018	60	127	220	10
IMG 125 Riser	58352028	100	147	220	15
IMG 125 Riser	58352019	60	127	320	15
IMG 125 Riser	58352029	100	147	320	21
IMG 160 Riser	58362018	60	127	270	17
IMG 160 Riser	58362028	100	167	270	25
IMG 160 Riser	58362019	60	127	420	26
IMG 160 Riser	58362029	100	167	420	38

**Application examples**



### Double clamping jaw



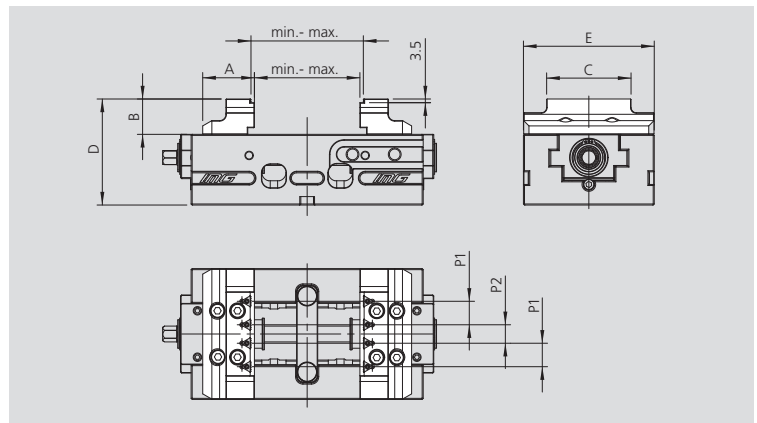
Type	Id. No.
IMG-DCJ-125	58351719
IMG-DCJ-160	58361719

### Retainer plate for fixed clamping



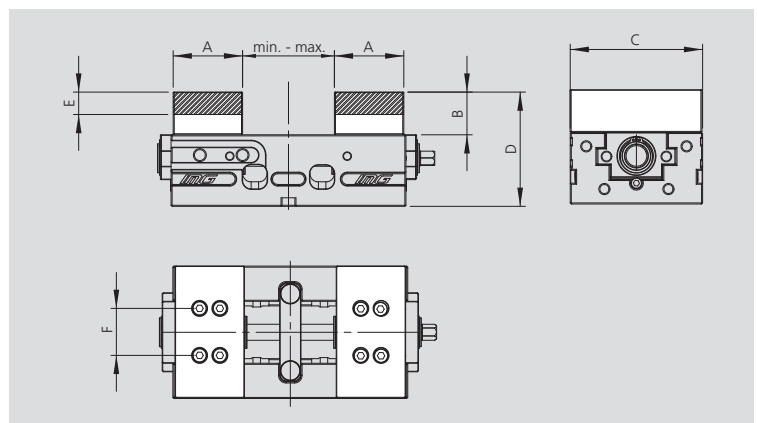
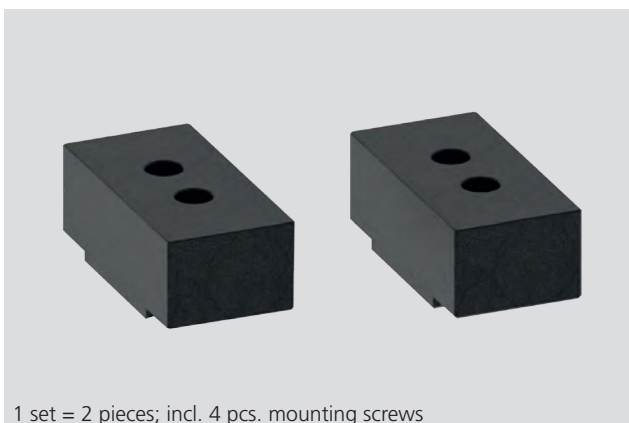
Type	Id. No.
IMG-RP-125	58351019
IMG-RP-160	58361019

### Reduced jaws



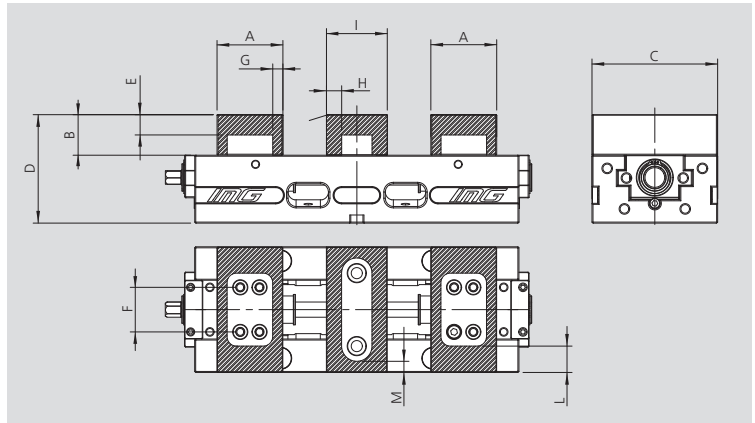
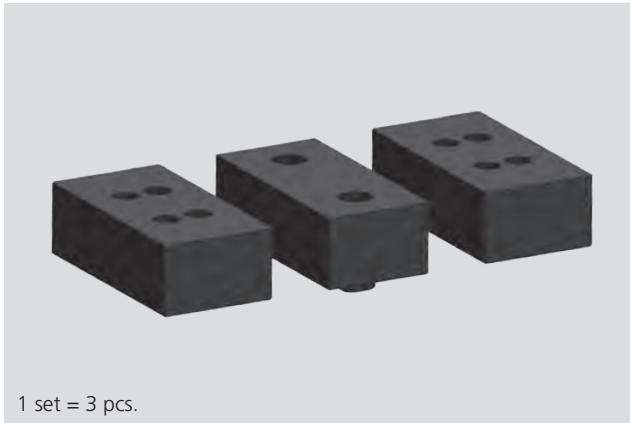
Type	Id. No.	A	B	C	D	E	p1	p2	min.	max.
IMG-RJ-125-220	58351519	49	33.5	80	100.5	123.5	22.25	17.5	0-7	99-105
IMG-RJ-125-320		49	33.5	80	100.5	123.5	22.25	17.5	0-7	159-165
IMG-RJ-160-270	58361519	73	43.5	90	110.5	158.5	18	18	0-7	129-135
IMG-RJ-160-420		73	43.5	90	110.5	158.5	18	18	0-7	209-215

### Soft jaws (soft steel – aluminium)



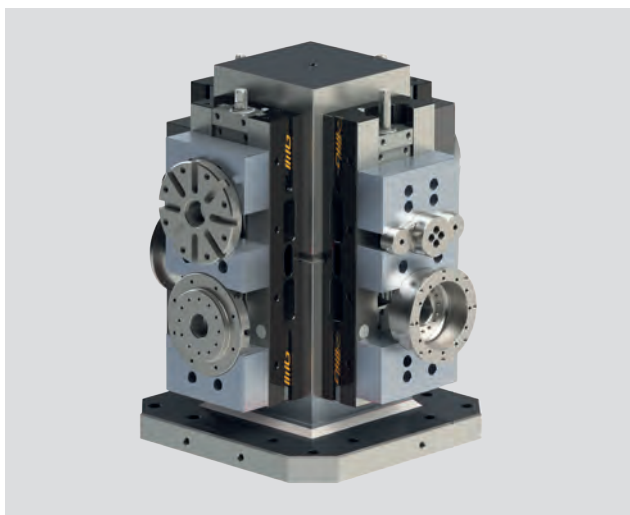
Type	Id. No.	A	B	C	D	E	F	min.	max.
IMG-SJA-125 (ALU)	58351619	65	40	123,5	107	20	44	0	86 (125x220) / 186 (125x320)
IMG-SJS-125 (Fe)	58351629	65	40	123,5	107	20	44	0	86 (125x220) / 186 (125x320)
IMG-SJA-160 (ALU)	58361619	85	50	158.5	117	25	52	0	141-147 (160x270) / 221-227 (160x420)
IMG-SJS-160 (Fe)	58361629	85	50	158.5	117	25	52	0	141-147 (160x270) / 221-227 (160x420)

Soft jaws for double clamping

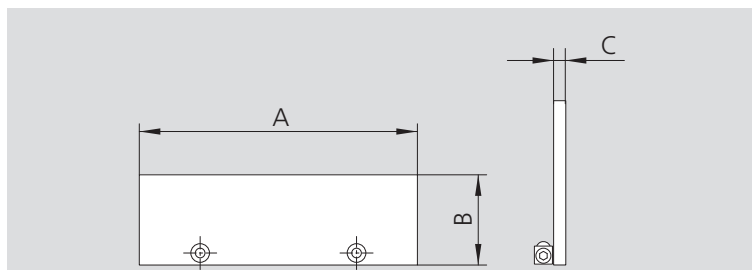


Type	Id. No.	A	B	C	D	E	F	G	H	I	L	M
IMG-SJDC-125 (ALU)	58359519	65	40	123.5	107	20	44	10	15	60	25	11
IMG-SJDC-125 (Fe)	58359619	65	40	123.5	107	20	44	10	15	60	25	11
IMG-SJDC-160 (ALU)	58369519	85	50	158.5	117	25	52	16.5	15	60	35	28
IMG-SJDC-160 (Fe)	58369619	85	50	158.5	117	25	52	16.5	15	60	35	28

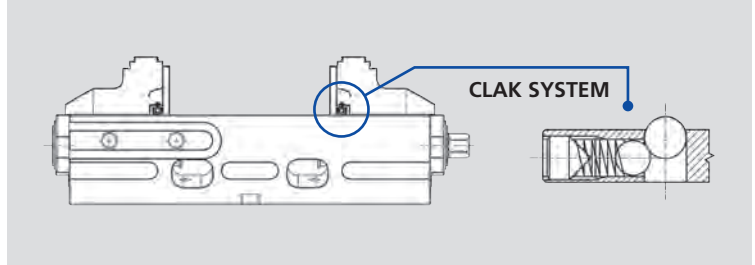
Application example



Quick change modular parallels



Application example:



Type	Id. No.	A	B	C
For IMG 125	58455115	124	15	4
For IMG 125	58455120	124	20	4
For IMG 125	58455125	124	25	4
For IMG 160	58455315	159	15	4
For IMG 160	58455325	159	25	4
For IMG 160	58455335	159	35	4



## Torque wrench



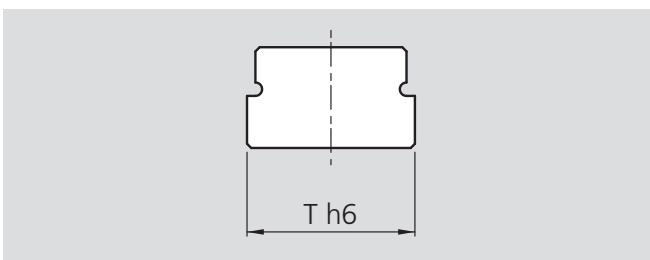
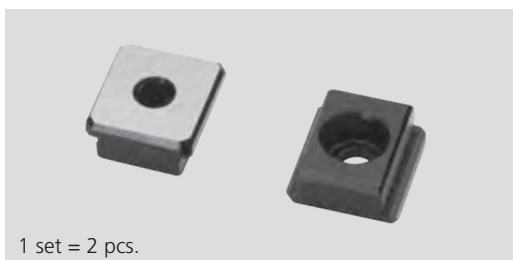
Type	Id. No.
IMG-TW-125	58351719
IMG-TW-160	58361719

## Workstop



Type	Id. No.
IMG-WS-125	58351719
IMG-WS-160	58361719

## Positioning keys for T slot



Type	mm 12 - h6	mm 14 - h6	mm 16 - h6	mm 18 - h6	mm 20 - h6	mm 22 - h6
Id. No.	58351392	58351393	58351394	58351395	58351396	58351397

## Key for APS single use



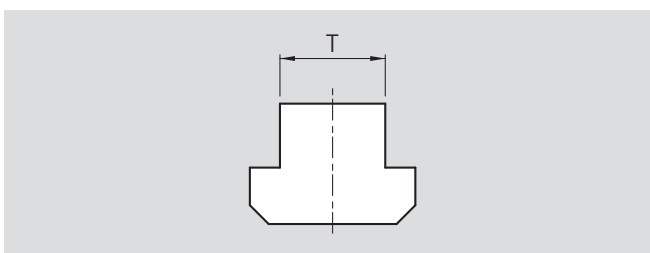
Type	Id. No.
APS-KSU-140-190	46162333

## Magnetic extractor for IMG protection



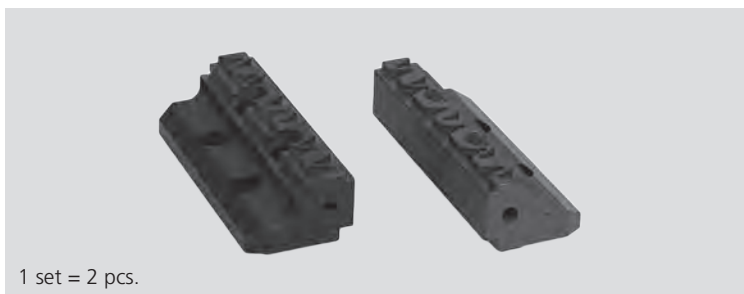
Type	Id. No.
IMG-ME	71290755

## Clamps



Type	T 12	T 14	T 16	T 18	T 20	T 22
Id. No.	58022792	58022793	58022794	58022795	58022796	58022797

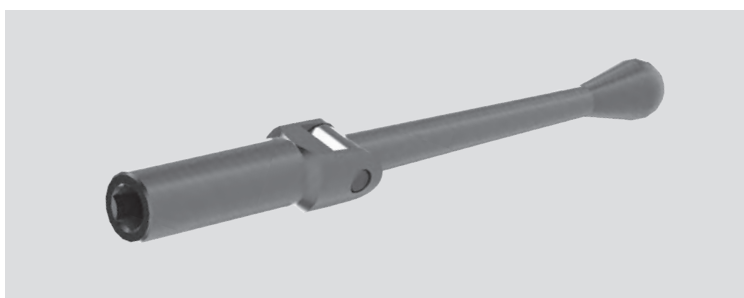
## SinterGrip jaws



1 set = 2 pcs.

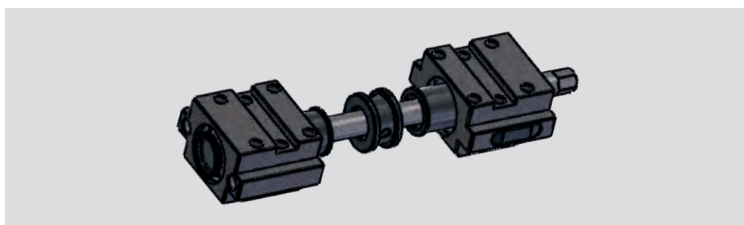
Type	Id. No.
IMG-SGJ-125	58351219
IMG-SGJ-160	58361219

## Wrench



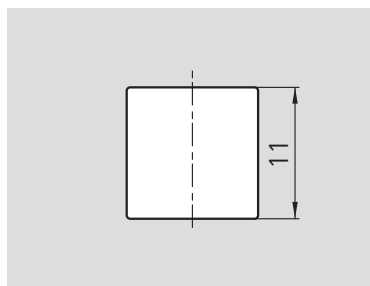
Type	Id. No.
IMG-W-125	58351910
IMG-W-160	58361910

## Spindle group



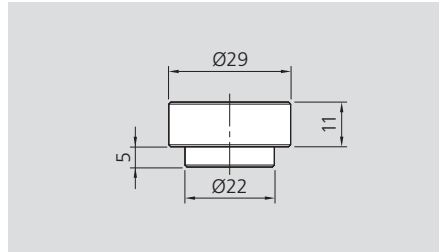
Type	Id. No.
IMG-SG-125-220	58359010
IMG-SG-125-320	58359020
IMG-SG-160-270	58369010
IMG-SG-160-420	58369020

**Key for single use on APS**  
 (remains in vise body) for IMG 125 / 160



Type	Id. No.
IMG-KSU-125	58351312
IMG-KSU-160	58361312

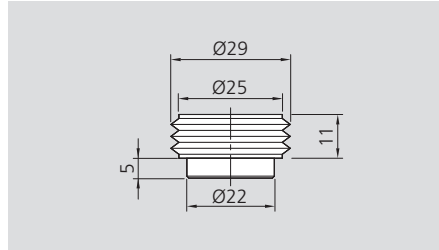
**Grip inserts smooth, height 11 mm**



**Smooth**  
**Height 11 mm**  
**Set consisting of 4 grippers**  
**and 4 fixing screws**

**Id. No.**  
 58906114

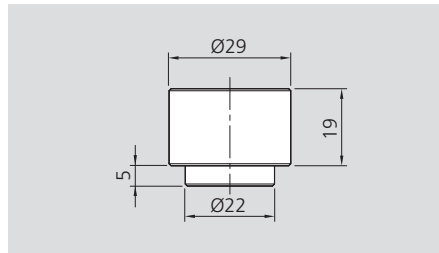
**Grip inserts serrated, height 11 mm**



**Serrated**  
**Height 11 mm**  
**Set consisting of 4 grippers**  
**and 4 fixing screws**

**Id. No.**  
 58906124

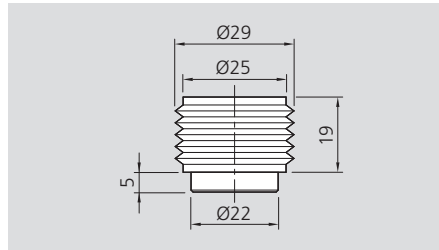
**Grip inserts smooth, height 19 mm**



**Smooth**  
**Height 19 mm**  
**Set consisting of 4 grippers**  
**and 4 fixing screws**

**Id. No.**  
 58906214

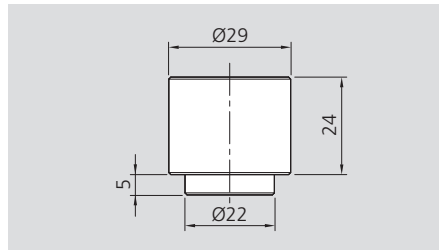
**Grip inserts serrated, height 19 mm**



**Serrated**  
**Height 19 mm**  
**Set consisting of 4 grippers**  
**and 4 fixing screws**

**Id. No.**  
 58906224

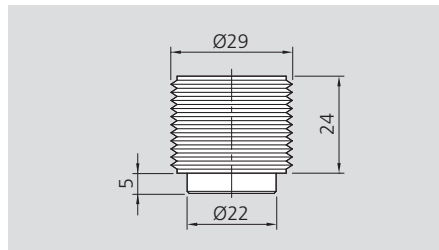
**Grip inserts smooth, height 24 mm**



**Smooth**  
**Height 24 mm**  
**Set consisting of 4 grippers**  
**and 4 fixing screws**

**Id. No.**  
 58906314

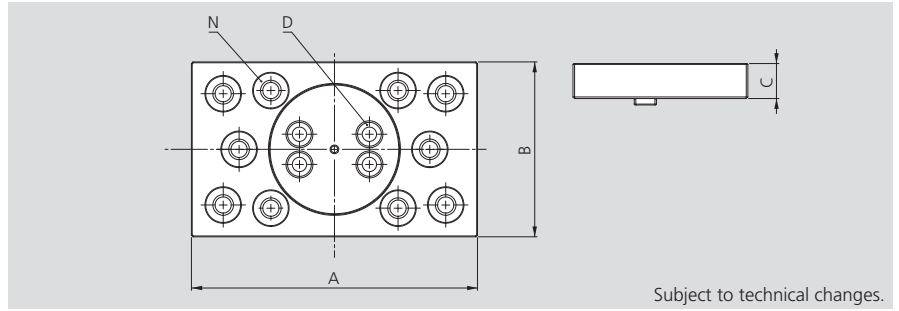
**Grip inserts serrated, height 24 mm**



**Serrated**  
**Height 24 mm**  
**Set consisting of 4 grippers**  
**and 4 fixing screws**

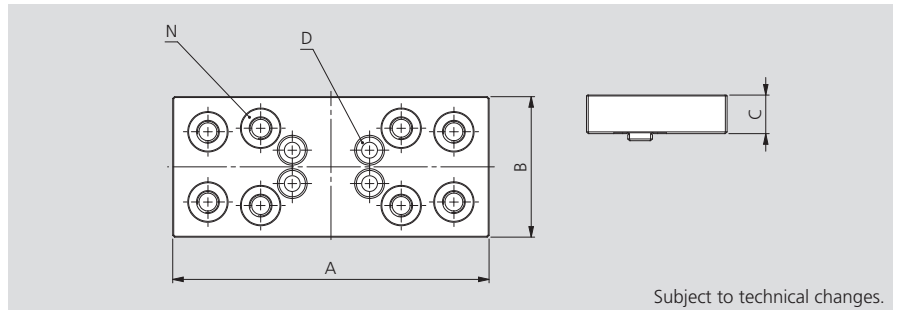
**Id. No.**  
 58906324

Floating top jaw to use grip inserts **1**



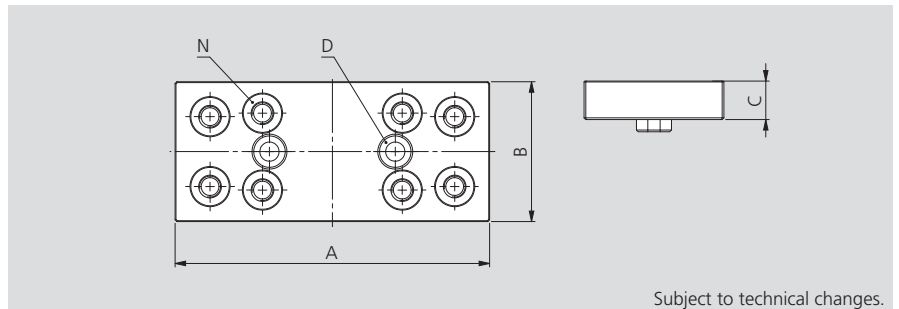
Type	Id. No.	A [mm]	B [mm]	D [mm]	N	C [mm]	Weight [kg]
IMG-FJG-125	58352520	180	110	M8	10	22	3.1
IMG-FJG-160	58362520	200	120	M10	10	22	2.7

Fixed / movable top jaw to use grip inserts **2**



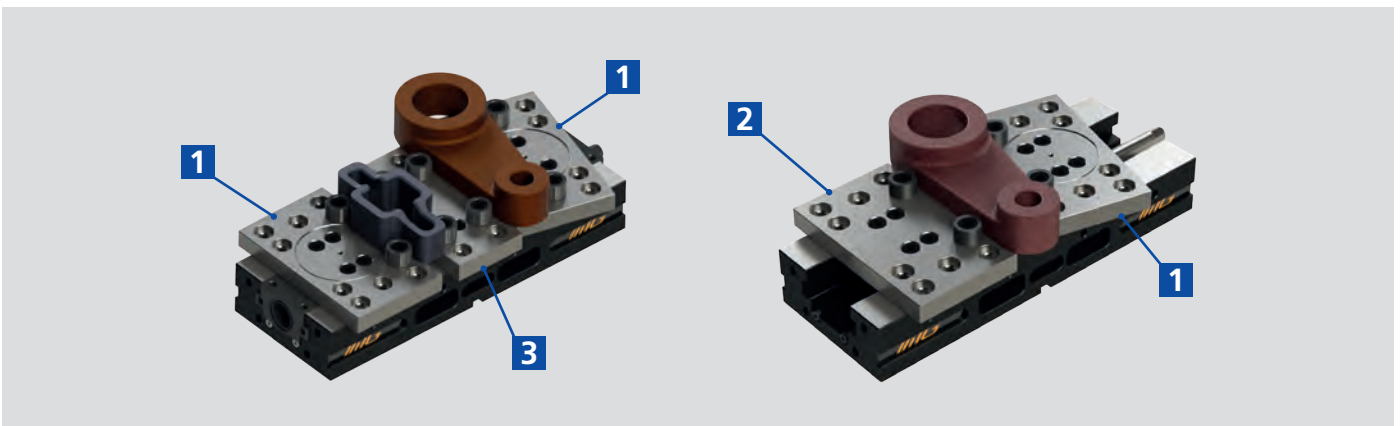
Type	Id. No.	A [mm]	B [mm]	D [mm]	N	C [mm]	Weight [kg]
IMG-FMJG-125	58352510	180	80	M10	8	22	2.3
IMG-FMJG-160	58362510	200	90	M10	8	22	3.7

Fixed middle top jaw for double clamping to use grip inserts **3**

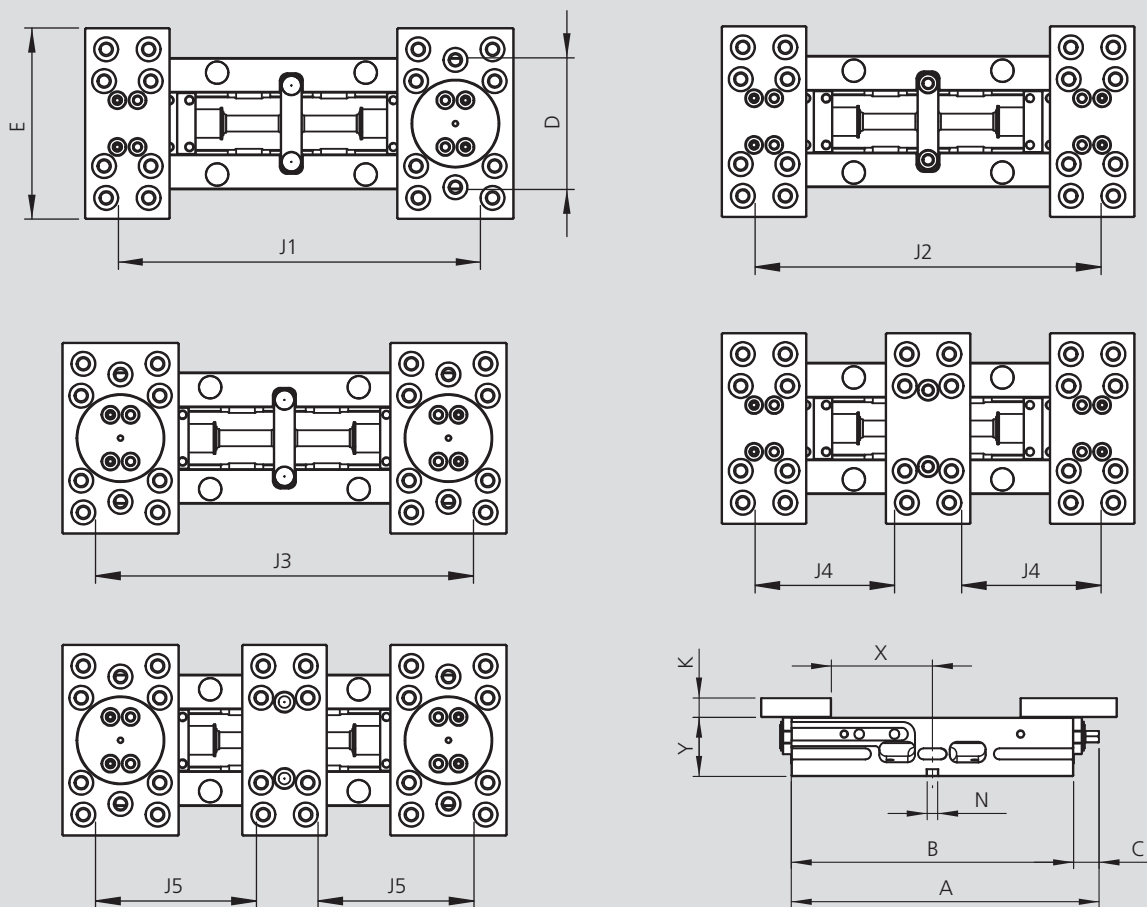


Type	Id. No.	A [mm]	B [mm]	D [mm]	N	C [mm]	Weight [kg]
IMG-FJDCG-125	58352530	180	80	M8	8	22	2.3
IMG-FJDCG-160	58362530	200	120	M10	10	22	2.9

Application examples



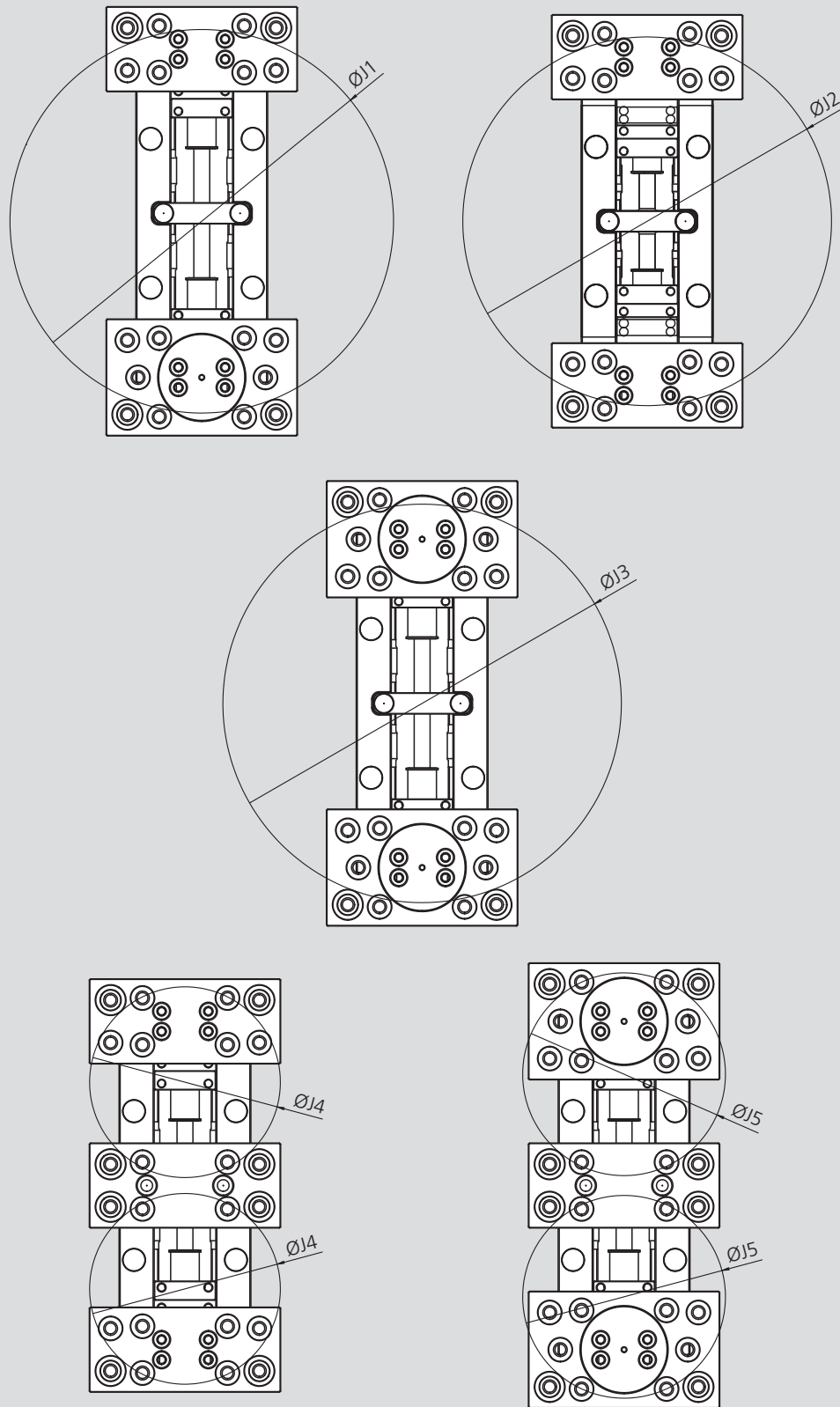
Floating jaws dimensions



Subject to technical changes.

Type	A	B	C	D	E	K	N	X	Y	J1	J2	J3	J4	J5
For IMG 125-220	247	220	27	124	180	22	12	54	67	215	200	230	65,5	X
For IMG 125-320	349	320	29	124	180	22	12	115	67	335	349	350	125,5	140,5
For IMG 160-270	299	270	29	159	200	22	12	59,5	67	290	290	290	105,5	105,5
For IMG 160-420	449	420	29	160	200	22	12	150	67	448	448	448	184,5	184,5

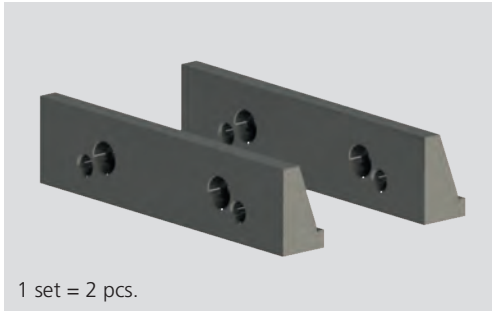
Maximum diameters of floating jaws



Subject to technical changes.

Type	ØJ1	ØJ2	ØJ3	ØJ4	ØJ5
For IMG 125-220	252	239	265	122	-
For IMG 125-320	360	347	375	179	190
For IMG 160-270	327	327	327	180	180
For IMG 160-420	441	441	441	224	224

### Smooth jaws



Type	Id. No.	Weight [kg]
IMG-SJ-125	58351415	0.6
IMG-SJ-160	58361415	1.45

### Grooved jaws



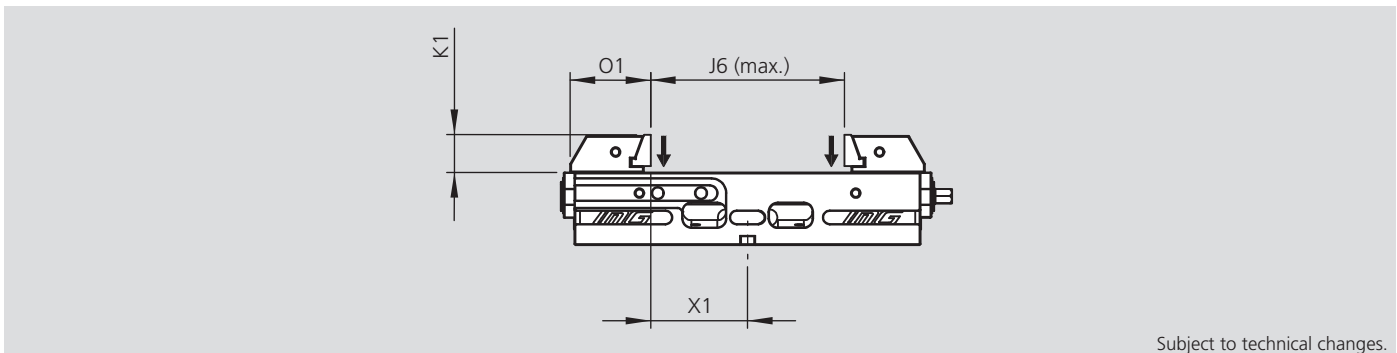
Type	Id. No.	Weight [kg]
IMG-GJ-125	58351425	0.6
IMG-GJ-160	58361425	1.4

### Pull down jaws with supports



Type	Id. No.	Weight [kg]
IMG-SPDJ-125	58351419	4.1
IMG-SPDJ-160	58361419	8.3

### Pull down jaws dimensions



Type	K1 [mm]	O1 [mm]	X1 [mm]	J6 [mm]
For IMG 125-220	35	74,4	59,5	119
For IMG 125-320	35	74,4	119,5	239
For IMG 160-270	45	91,5	76	152
For IMG 160-420	45	91,5	155	310

