



Fraise aluminium

# EPN-AL • EPA-AL

Volume 1



# CARACTÉRISTIQUES PRINCIPALES : EPN-AL • EPA-AL

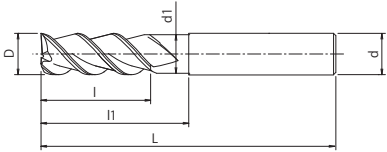
---





# EPA-AL-3FS NOUVEAU

Fraisage | Carbure monobloc



- Fraise carbure revêtu ALC
- Pour les aluminium et cuivre
- 3 dents, taillé courte



CARBIDE
ALC
40°
h6
e8

EDP	Z	D	F (largeur de la marge)	L	l1	l	d1	d	Prix
EP019903	3	3	0.05 x 45°	50	7	4	2,8	6	
EP019904	3	4	0.05 x 45°	54	8	5	3,8	6	
EP019905	3	5	0.1 x 45°	54	9	6	4,8	6	
EP019906	3	6	0.1 x 45°	54	15	7	5,8	6	
EP019908	3	8	0.1 x 45°	55	17	9	7,8	8	
EP019910	3	10	0.1 x 45°	60	20	11	9,8	10	
EP019912	3	12	0.2 x 45°	70	24	12	11,8	12	
EP019916	3	16	0.2 x 45°	80	28	16	15,8	16	
EP019920	3	20	0.2 x 45°	82	32	20	19,8	20	

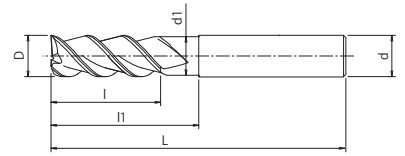
Fraisage | Carbure monobloc





# EPA-AL-3FL NOUVEAU

Fraisage | Carbone monobloc



- Fraise carbure revêtu ALC
- Pour les aluminium et cuivre
- 3 dents, taillé longue




EDP	Z	D	F (largeur de la marge)	L	l1	l	d1	d	Prix
EP020003	3	3	0.05 x 45°	57	12	9	2,9	6	
EP020004	3	4	0.05 x 45°	57	16	11	3,8	6	
EP020005	3	5	0.1 x 45°	57	18	13	4,8	6	
EP020006	3	6	0.1 x 45°	57	20	13	5,8	6	
EP020008	3	8	0.1 x 45°	63	25	19	7,8	8	
EP020010	3	10	0.1 x 45°	72	32	22	9,8	10	
EP020012	3	12	0.2 x 45°	83	38	26	11,8	12	
EP020016	3	16	0.2 x 45°	92	50	32	15,8	16	
EP020020	3	20	0.2 x 45°	104	62	38	19,8	20	

# CONDITIONS DE COUPE

Fraisage | Carbure monobloc | Conditions de coupe

## EPN-AL-3FS/FL


Contournage

	Aluminium	Fonte d'aluminium >5% Si <10% Si
	Vc	400 - 600 (m/min)
∅	fz (mm)	fz (mm)
3	0,027	0,024
4	0,036	0,032
5	0,045	0,041
6	0,054	0,049
8	0,072	0,065
10	0,090	0,081
12	0,108	0,097
16	0,144	0,130
20	0,195	0,175

ae max. 60% x D ap = 1xD

## EPN-AL-3FS/FL


Rainurage

	Aluminium	Fonte d'aluminium >5% Si <10% Si
	Vc	400 - 600 (m/min)
∅	fz (mm)	fz (mm)
3	0,019	0,017
4	0,025	0,022
5	0,032	0,029
6	0,038	0,034
8	0,050	0,046
10	0,063	0,057
12	0,076	0,068
16	0,101	0,091
20	0,137	0,123

ap = 1xD

## EPA-AL-3FS/FL


Contournage

	Aluminium	Fonte d'aluminium >5% Si <10% Si
	Vc	500 - 800 (m/min)
∅	fz (mm)	fz (mm)
3	0,027	0,024
4	0,036	0,032
5	0,045	0,041
6	0,054	0,049
8	0,072	0,065
10	0,090	0,081
12	0,108	0,097
16	0,144	0,130
20	0,195	0,175

ae max. 60% x D ap = 1xD

## EPA-AL-3FS/FL

Rainurage

	Aluminium	Fonte d'aluminium >5% Si <10% Si
	Vc	500 - 800 (m/min)
∅	fz (mm)	fz (mm)
3	0,019	0,017
4	0,025	0,022
5	0,032	0,029
6	0,038	0,034
8	0,050	0,046
10	0,063	0,057
12	0,076	0,068
16	0,101	0,091
20	0,137	0,123

ap = 1xD





shaping your dreams

#### **OSG EUROPE LOGISTICS**

Avenue Lavoisier 1  
B-1300 Z.I. Wavre - Nord - Belgium  
Tel: +32 10 23 05 07  
Fax: +32 10 23 05 51  
info@osgeurope.com

#### **OSG BELUX**

Avenue Lavoisier 1  
B-1300 Z.I. Wavre - Nord - Belgium  
Tel: +32 10 23 05 11  
Fax: +32 10 23 05 31  
info@osg-belgium.com

#### **OSG FRANCE**

Parc Icade, Paris Nord 2  
Immeuble "Le Rimbaud"  
22 Avenue des Nations  
CS66191 - 93420 Villepinte - France  
Tel: +33 1 49 90 10 10  
Fax: +33 1 49 90 10 15  
sales@osg-france.com

#### **OSG NETHERLANDS**

Bedrijfsweg 5 - 3481 MG Harmelen  
Tel: +31 348 44 2764  
Fax: +31 348 44 2144  
info@osg-nl.com

#### **OSG UK**

Shelton house, 5 Bentalls  
Pipps Hill Ind Est, Basildon Essex SS14 3BY  
Tel: +44 845 305 1066  
Fax: +44 845 305 1067  
sales@osg-uk.com

#### **SLOVAKIA**

Branch office of OSG Europe Logistics s.a.  
Tel (SK) +421 2 4329 1295  
Tel (BE) +32 10 23 05 07  
Fax (BE) +32 10 23 05 51  
sales-osgsvk@osgeurope.com

#### **OSG POLAND Sp. z.o.o.**

Spółdzielcza 57  
05-074 Halinów - Poland  
Tel: +22 760 82 71  
Fax: +22 760 82 71  
osg@osg-poland.com

#### **OSG GERMANY**

Karl-Ehmann-Str. 25  
D - 73037 Göppingen - Germany  
Tel: +49 7161 6064 - 0  
Fax: +49 7161 6064 - 444  
info@osg-germany.de

#### **OSG SCANDINAVIA**

(For Scandinavian countries)  
Langebjergvaenget 16  
4000 Roskilde - Denmark  
Tel: +45 46 75 65 55  
Fax: +45 46 75 67 00  
osg@osg-scandinavia.com

#### **SWEDEN**

Branch office of OSG SCANDINAVIA  
Abrahams Gränd 8  
295 35 Bromölla - Sweden  
Tel: +46 40 41 22 55  
Fax: +46 40 41 32 55  
osg@osg-scandinavia.com

#### **OSG IBERICA**

Bekolarra 4  
E - 01010 Vitoria-Gasteiz - Spain  
Tel: +34 945 242 400  
Fax: +34 945 228 883  
osg.iberica@osg-ib.com

#### **RUSSIA**

Butlerova street, 17B, office 5069  
117342 Moscow - Russia  
Tel: +7 (495) 150 41 54  
info@osg-russia.com

#### **OSG TURKEY**

Rami Kişla Cad.No:56 Eyüp  
Istanbul 34056 - Turkey  
Tel:+90 212 565 24 00  
Fax: +90 212 565 44 00  
info@osg-turkey.com

#### **ROMSAN INTERNATIONAL CO. SRL**

Reprezentant Exclusiv OSG  
23-25, Nerva Traian Street  
031044 Bucuresti - România  
Tel: +40 021 322 07 47  
Fax: +40 021 321 56 00  
romsan.int@romsan.ro

#### **AUSTRIA**

Branch office of OSG GERMANY  
Messestraße 11  
A-6850 Dornbirn  
Tel: +49 7161 6064-0  
Fax: + 49 7161 6064-444  
info@osg-germany.de

#### **OSG ITALIA**

Via Cirenaiica n. 52 int. 61/63  
I - 10142 Torino - Italy  
Tel: +39 0117705211  
Fax: +39 0117071402  
info@osg-italia.it

#### **Vischer & Bolli AG**

Werkzeug- und Spanntechnik  
Im Schossacher 17  
CH-8600 Dübendorf  
T +41 44 802 15 15  
F +41 44 802 15 95  
info@vb-tools.com

#### **Vischer & Bolli SA**

Technique d'usinage et de serrage  
Rue du Puits-Godet 8a  
CH-2000 Neuchâtel  
T +41 32 721 00 47  
F + 41 32 721 00 48  
info-fr@vb-tools.com

05/2019 - All rights reserved. © OSG Europe 2019

The contents of this catalogue are provided to you for viewing only. They are not intended for reproduction either in part or in whole in this or other medium. They cannot be copied, used to create derivation work or used for any reason, by means without the express, written permission of the copyright owner. If prices are stated, they are netto unit-prices and any eventual tax(es) have to be added. The company is not responsible for any printing error in technical, price and/or any other data.

Tool specifications subject to change without notice.

[www.osgeurope.com](http://www.osgeurope.com)

**OSG EUROPE LOGISTICS S.A.**